

DOVER HIGH SCHOOL & CAREER TECHNICAL CENTER



The vision for a new Dover High School and Career Technical Center, as articulated by teachers, administrators, students, and community members, is a fully integrated school that facilitates a broad range of educational delivery methods and inspires hands-on exploration and learning.

When students and community members enter the school, they arrive at the Town Square, a central dining commons that acts as the heart of the school and unifies core spaces including the gym, auditorium, and publically focused CTE spaces, from culinary arts to cosmetology. Career Technical programs are also fully integrated into the academic wings and visible so that students are engaged and immersed in a culture of making. Along with classroom and specialized learning spaces, each wing contains a Learning Commons with social spaces and student-centered learning nodes. The design reflects the idea of a “future proof” school, one that is truly flexible and can be re-organized by department, grade levels, or subject while maintaining equal access to the CTE and social spaces.

For more information visit: www.dover.k12.nh.us/dhsctc



2016

2017

JULY AUGUST SEPTEMBER OCTOBER NOVEMBER DECEMBER JANUARY FEBRUARY MARCH APRIL MAY JUNE JULY AUGUST SEPTEMBER OCTOBER

Start of construction

2

SECOND LEVEL



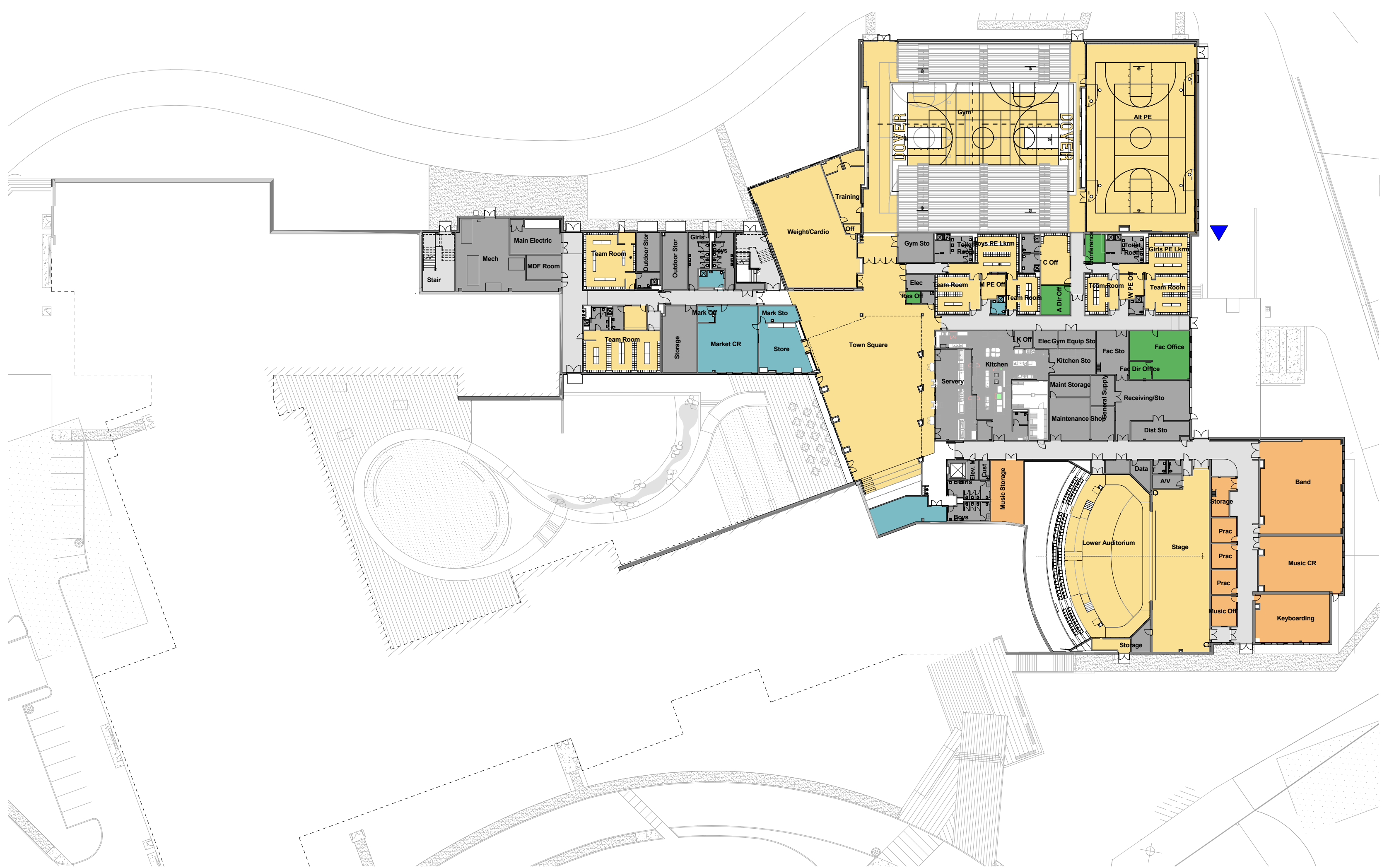
1

ENTRY LEVEL



LL

LOWER LEVEL



- COLOR LEGEND**
- Administration
 - Community / Shared
 - Classroom
 - Special Education
 - Media
 - Science
 - CTC
 - Mechanical
 - Support
 - Toilet Rooms
 - Circulation
 - Learning Commons

2018

End of construction / School opening

Begin Phase 2 Site / Demolition

2019

NOVEMBER DECEMBER JANUARY FEBRUARY MARCH APRIL MAY JUNE JULY AUGUST SEPTEMBER OCTOBER NOVEMBER DECEMBER JANUARY

Phase 2 Completion