

VEVOR[®]

TOUGH TOOLS, HALF PRICE

Technical Support and E-Warranty Certificate <https://www.vevor.com/support>

PROJECTION SCREEN

USER MANUAL

MODEL NO.: QC-168

We continue to be committed to provide you tools with competitive price.

"Save Half", "Half Price" or any other similar expressions used by us only represents an estimate of savings you might benefit from buying certain tools with us compared to the major top brands and does not necessarily mean to cover all categories of tools offered by us. You are kindly reminded to verify carefully when you are placing an order with us if you are actually saving half in comparison with the top major brands.

VEVOR[®]

TOUGH TOOLS, HALF PRICE

Projection Screen

MODEL NO.: QC-168



NEED HELP? CONTACT US!

Have product questions? Need technical support? Please feel free to contact us:

Technical Support and E-Warranty Certificate
www.vevor.com/support

This is the original instruction, please read all manual instructions carefully before operating. VEVOR reserves a clear interpretation of our user manual. The appearance of the product shall be subject to the product you received. Please forgive us that we won't inform you again if there are any technology or software updates on our product.

 **WARNING:**

Please read this manual carefully before using the product. Failure to do so may result in serious injury. SAVE THIS MANUAL

Inflatable movie screen storage precautions

1. Do not use fingers or hard objects to touch the screen surface. Do not splash milk, fruit juice or other chemical doses to the screen surface. Keep the screen far away from high temperature objects or fire.
2. If the screen is dirty, wash it gently with a clean cloth or a cotton ball. Do not use organic solvents to clean the screen surface.
3. Avoid strong squeezing as much as possible.
4. Avoid storing in a cool and humid place, try to keep it dry.
5. Keep ventilated and stay away from fire4. Keep the inflation fan on when using it.

TECHNICAL SPECIFICATIONS

Model	QC-168	
Rating(s)	AC120V, 60Hz, 100W	AC220-240V, 50Hz, 100W
Product Size	168 inch	
Product Dimensions(LxWxH)	3400*1550*2600 mm	
Packing Size(LxWxH)	400*310*250 mm	
Net Weight (kg)	4.75	
Gross Weight (kg)	5.5	

PACKAGE CONTENTS



Storage bag*1



Projection



Frame*1



Iron Stakes*6



strong ropes*4



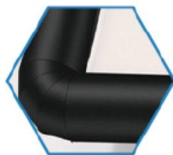
Blower*1
(The blower is built into the product)

ASSEMBLY STEPS



1 Lay out frame, close deflation zipper.

1



2 Turn on the blower, inflate in 2 minutes.

2



3 Attach the white screen to the black frame.

3



Let it stand up, attach the wind cord.

COMPLETION



Address: Baoshanqu Shuangchenglu 803long 11hao 1602A-1609shi Shanghai

Imported to AUS: SIHAO PTY LTD. 1 ROKEVA STREETEASTWOOD NSW 2122 Australia

Imported to USA: Sanven Technology Ltd., Suite 250, 9166 Anaheim Place, Rancho Cucamonga, CA 91730



SHUNSHUN GmbH
Römeräcker 9 Z2021,76351
Linkenheim-Hochstetten, Germany



Pooledas Group Ltd
Unit 5 Albert Edward House, The Pavilions
Preston, United Kingdom

Made In China

VEVOR[®]

TOUGH TOOLS, HALF PRICE

Support and E-Warranty Certificate

www.vevor.com/support