

# **WATER SUPPLY IMPROVEMENTS – WILLAND POND/ROUTE 108**

## **Information Handout**



**City of Dover**

**February 2019**

### **Summary**

The City is starting a water supply project at Willand Pond to bring new wells on line that will add approximately 850,000 gallons per day (gpd) in capacity. A new transmission main will be constructed on New Rochester Road (Route 108) to connect the new wells to the Lowell Avenue Water Treatment Facility.

A water main connection with the City of Somersworth will be constructed on the north side of Willand Pond. This will enable water to be shared between our two communities in the event of an emergency. The project will also make improvements to the Smith and Cummings wells, which currently supply the Lowell Avenue Treatment Facility.

### **Funding**

The project is funded in part by a \$9.1M low interest loan from the Drinking Water State Revolving Loan Fund, including 10% debt forgiveness, and a \$2.6M grant from the NH Drinking Water and Groundwater Trust Fund.

#### **Willand Pond/Route 108 Improvements**

- 5,500 LF transmission main along New Rochester Road and Webb Place
- New control building and wells at Willand Pond
- Replace existing control building at Smith/Cummings Wells
- 2,600 LF interconnection main between Somersworth and Dover.

#### **Project Benefits**

- Additional 850,000 GPD to the existing water supply
- Emergency supply with Somersworth
- Safe and reliable water supply for the future of Dover
- Durable, attractive buildings
- Road improvements

### **Contact Information**

Engineer: Direct questions or comments to Underwood Engineers: Phil MacDonald, Project Manager or Thomas Page, Project Manager 436-6192 (Portsmouth office)

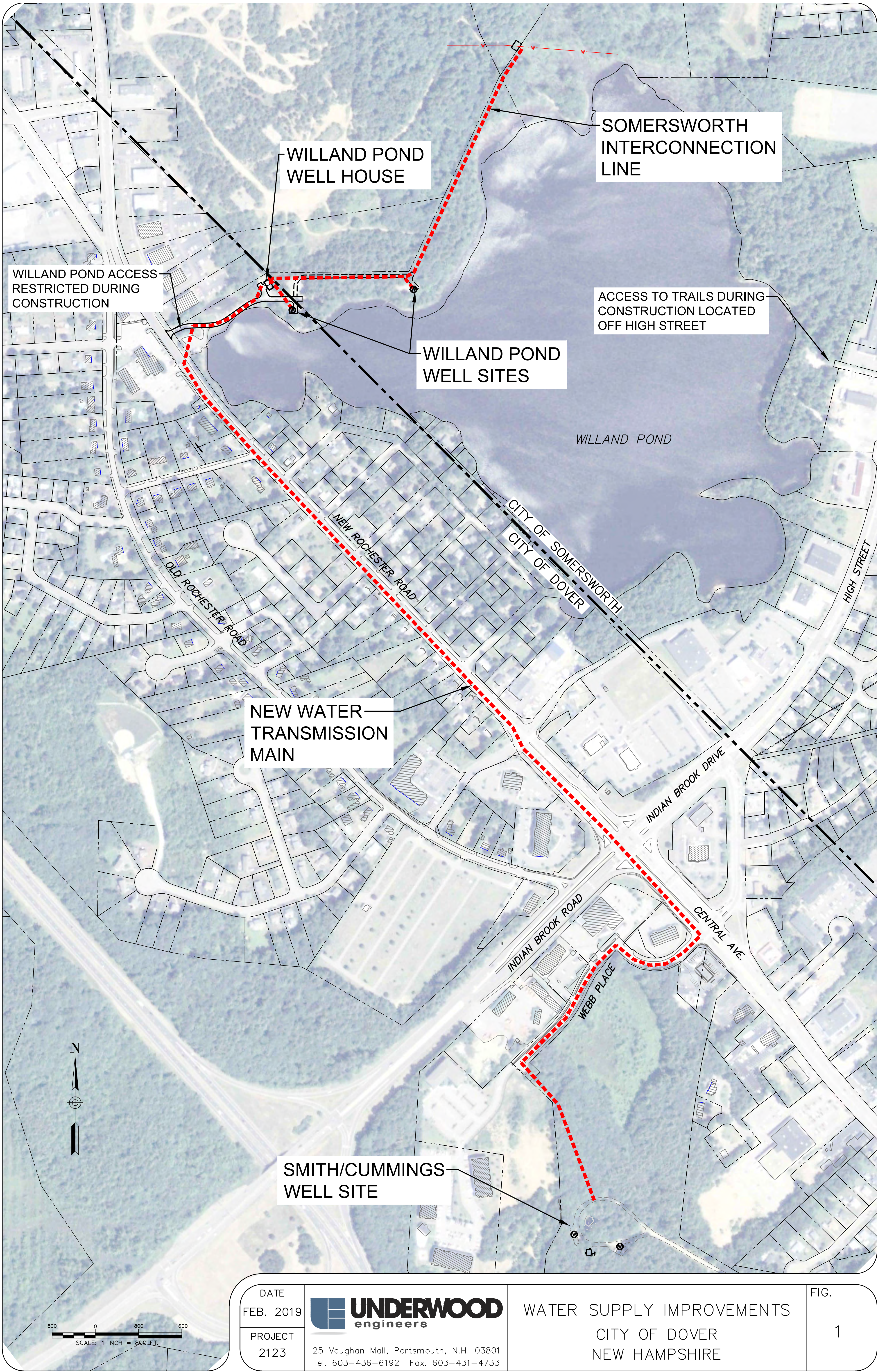
City: Community Services, Bill Boulanger, Superintendent, 516-6450

Contractor: Northeast Earth Mechanics (Route 108), Scherbon Consolidated (Willand Pond)

### **Construction Notes**

Construction is scheduled for Spring 2019 through December 2019. Water service is expected to be maintained without interruption. Construction activities at Willand Pond will require the temporary closure of access to the trails and boat launch facility from Route 108, but access will remain from High Street. Normal work hours will be limited to 7 AM to 5 PM, and efforts will be made to minimize noise and control dust. Traffic and driveway access to properties on New Rochester Road and Webb Place will be maintained to the extent possible. We apologize for any inconveniences and thank you for your cooperation during this important project.





DATE  
FEB. 2019

PROJECT  
2123



25 Vaughan Mall, Portsmouth, N.H. 03801  
Tel. 603-436-6192 Fax. 603-431-4733

WATER SUPPLY IMPROVEMENTS  
CITY OF DOVER  
NEW HAMPSHIRE

FIG.  
1