

Detailing Dover, Demographically



A COMMUNITY PROFILE

Statistics from Calendar Year 2012

January 2013

Dover At A Glance

Dover, founded in 1623, is the oldest continuous settlement in New Hampshire and the seventh oldest in the United States. The permanent settlement occurred in what is now the Dover Neck area.

For a few years Dover was an independent colony named Northam. In 1692 Northam became part of the Massachusetts Bay Colony. The original township of Dover included the present towns of Dover, Durham, Lee, Madbury, Somersworth, Rollinsford, and parts of Newmarket, Newington, and Greenland.

Dover has always used the Cochecho and Bellamy Rivers to its economic advantage. The first use of the water power of the Cochecho River was in 1642, when a sawmill was built. In the 1700s Dover had an extensive shipbuilding industry. By 1830, the city had become a leading manufacturer of cotton goods in the country, using the river to power several mills. Later in the nineteenth century, a brick industry flourished and shoe manufacturing developed in the 1900's.

Between 2000 and 2010, Dover was the



Dover in the fall

fastest growing community in New Hampshire, gaining over 3,000 residents and moving from the 7th most populous community to 5th most. This growth has been driven by, and reflective, of the changes that have occurred in Dover over the past 15 years, including the development of the Downeaster train service through Dover, the coming of the Children's Museum of New Hampshire, and the economic growth of Liberty Mutual, Measured Progress and Wentworth Douglass Hospital.

- Income

Also included is climate information, and general geographic information about Dover and south eastern New Hampshire.

Finally, you will find information about Dover's economic health and municipal operations.

What's Inside:

This community profile will walk you through Dover's population growth, introduce you to Dover's demographics, such as:

- Vital Records
- Housing Starts and Ages
- Vehicle Registrations

Our Mission:

To provide affordable, high quality municipal services and responsive accessible local governance ensuring all persons the opportunity to enjoy contributing to and being part of the Dover community

Contents:

GEOGRAPHY	2
PEOPLE	3
VITAL STATISTICS	4
TRANSPORTATION	4
BUILDING/HOUSING	5
CULTURAL/SOCIAL	6
RECREATION	7
ECONOMIC	8
MUNICIPAL	9
LAND USE MAP	10
DEVELOPMENT MAP	11

Detailing Dover, Demographically

Geographic Location



Dover's location in New Hampshire, and Strafford County

	Longitude (W)	Latitude (N)
Eastern	70° 49' 16"	43° 11' 40"
Western	70° 57' 40"	43° 12' 56"
Northern	70° 55' 30"	43° 15' 5"
Southern	70° 49' 38"	43° 7' 9"
Center	70° 52' 43"	43° 11' 28"
Altitude		
Max (301')	70° 55' 34"	43° 13' 50"
Min (0')	70° 49' 38"	43° 7' 9"

The City of Dover is the county seat for Strafford County, which lies in southeastern New Hampshire, bordering the state of Maine. Dover is bisected by the Spaulding Turnpike (NH Route 16) which connects northern New Hampshire and the Seacoast region. Additionally, NH and US Routes 4 travel through Dover, as do Routes 155, 108 and 9.

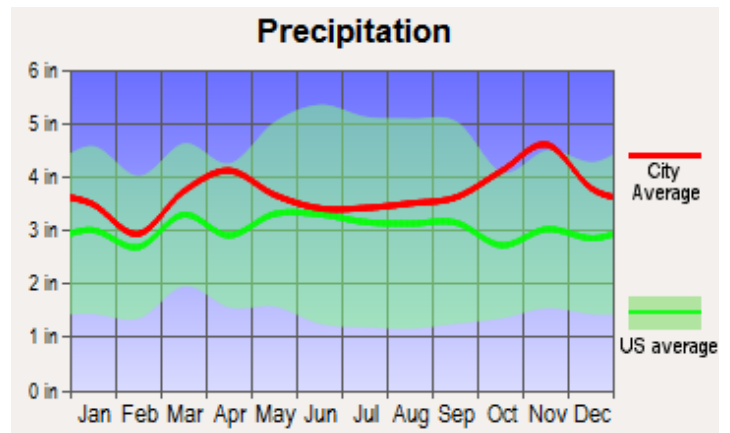
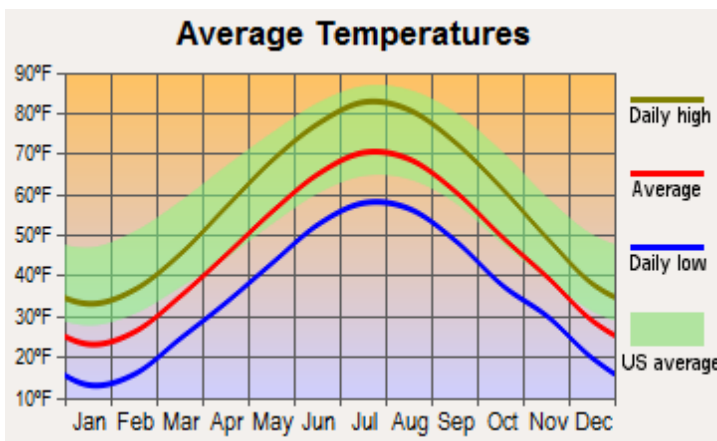
Bisecting the City is the Cochecho River. Along the eastern border with Maine, runs the Piscataqua River, and along the western side of the City is the Bellamy River. The Cochecho River empties into the Piscataqua River, which flows to the Atlantic. The Bellamy empties into Great Bay, which empties into the Piscataqua River.

Area (in acres)

Land	17,087
Commercial	388.7
Industrial	993.2
Institutional	318
Misc	413.2
Residential	5,356.2
Vacant	9,627.6
Watercourses	1,500
Totals	18,587

Dover is nestled between the mountains and the ocean. The community is close to the University of New Hampshire and the Pease International Tradeport. The city is a short drive to the Port of New Hampshire, the state's only deep water port, scene to industrial barges escorted by tugs, importing and exporting goods to and from the Granite State. Dover is a quick commute to the metropolitan area of Boston, and less than an hours drive to Boston's Logan International Airport and Manchester Boston Regional Airport. In addition the Amtrak Downeaster stops in Dover.

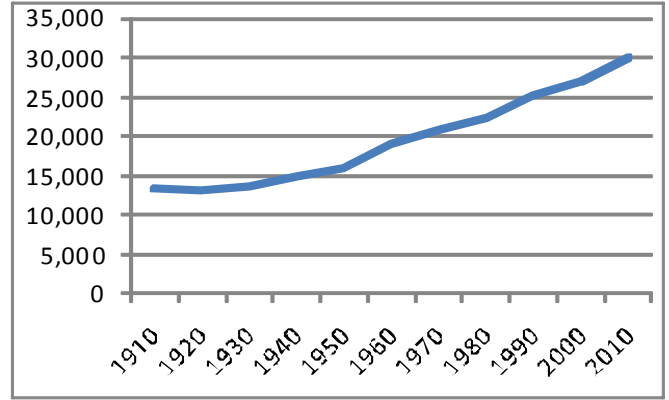
Average Temperature, and Rainfall



Statistics from Calendar Year 2012

Population

	Population	Change from Preceding Census	
		Number	Percentage
1910	13,247	N/A	N/A
1920	13,029	-218	-1.6%
1930	13,573	544	4.2%
1940	14,990	1,417	10.4%
1950	15,874	884	5.9%
1960	19,131	3,257	20.5%
1970	20,850	1,719	9.0%
1980	22,377	1,527	7.3%
1990	25,042	2,665	11.9%
2000	26,884	1,842	7.4%
2010	29,987	3,103	11.5%

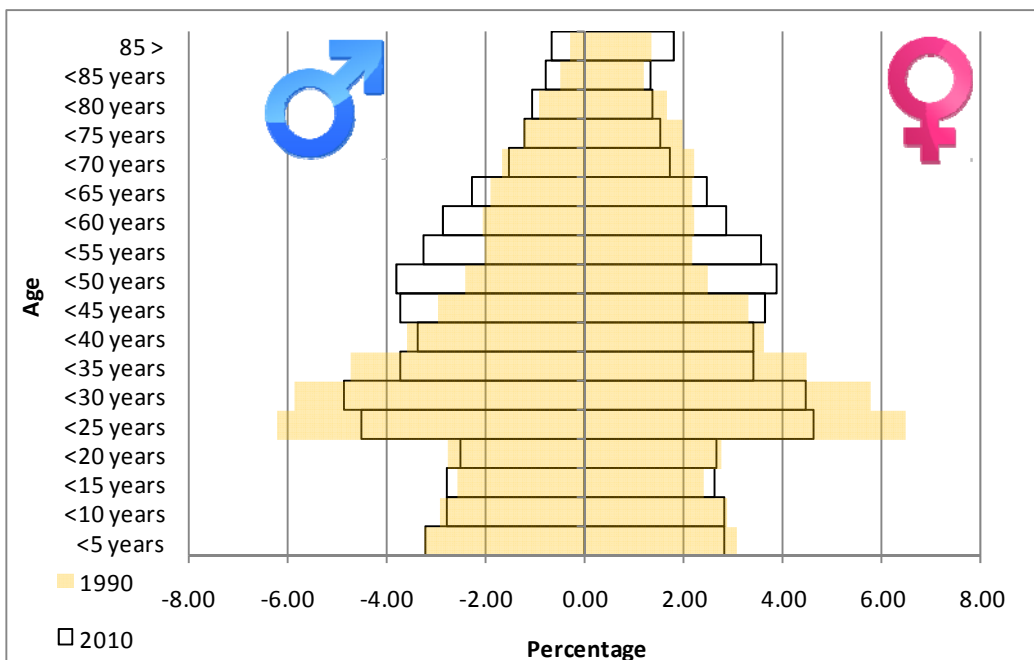


Diversity

Total Pop	Total*	White		African American		American Indian and Alaska Native		Asian		Native Hawaiian & Other Pacific Islander		Some Other Race		Hispanic or Latino (of any race)	
		#	%	#	%	#	%	#	%	#	%	#	%	#	%
29,987	29,307	27,155	92.7	521	1.8	59	0.2	1,371	4.7	14	0.05	187	0.6	660	2.3

* based upon census responses

Population Pyramid Comparison (1990 & 2010)



“DOVER GREW BY 3,103 BETWEEN 2000 AND 2010, THE FASTEST OF ANY COMMUNITY IN NH.”

Detailing Dover, Demographically



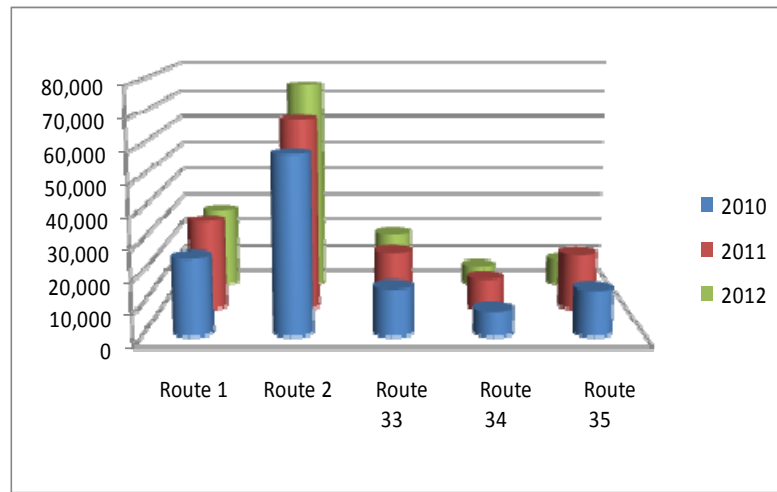
Vital Statistics

	Births	Deaths	Marriage Licenses
2010	251	261	260
2011	158	274	202
2012	168	257	214

Motor Vehicle Registrations

	Vehicles Registered
2010	28,334
2011	29,280
2012	30,486

COAST Ridership (CY 2010: 2012)

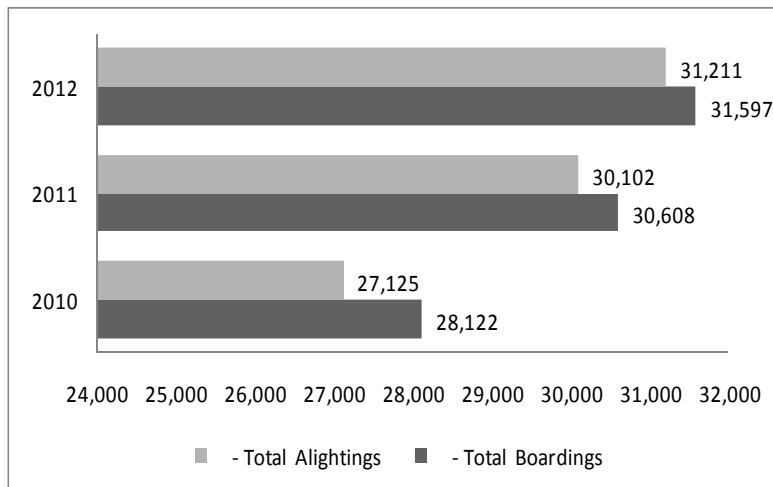


Dover is served by two main regional transportation systems, Amtrak's Downeaster service, and the Cooperative Alliance for Seacoast Transportation (COAST).

The Downeaster service runs between Boston, Ma and Brunswick Me, and stops in Dover seven times daily.

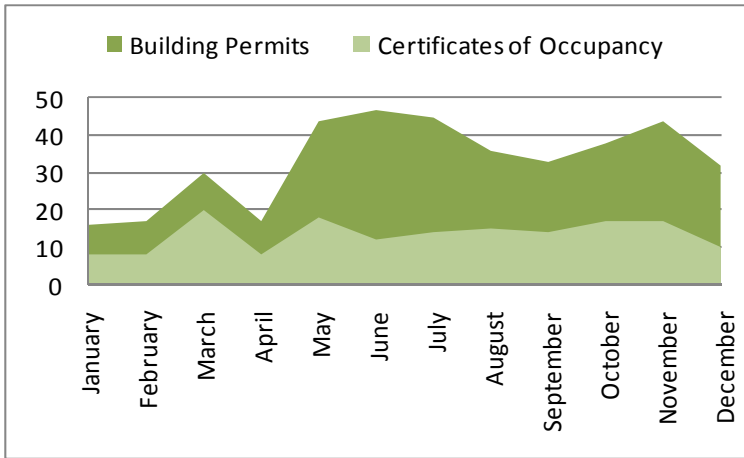
COAST runs multiple intercity bus routes throughout the Portsmouth/Dover/Rochester area, with a main junction point at the Dover Transportation Center.

Downeaster Ridership (CY 2010: 2012)



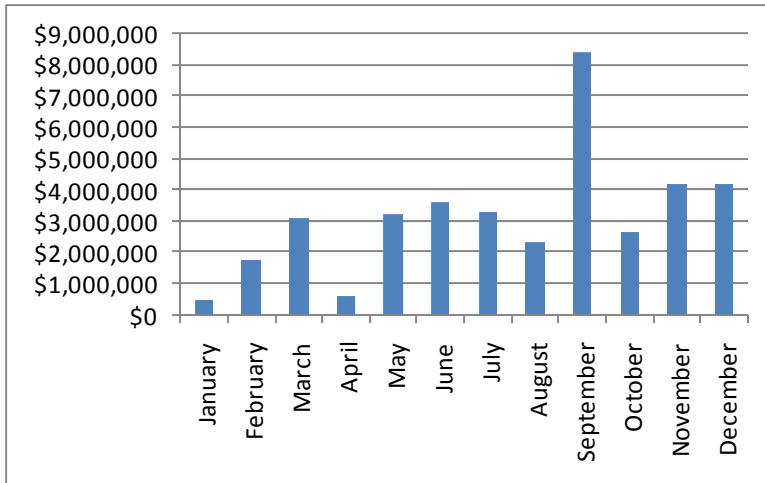
Statistics from Calendar Year 2012

Building Permits/Certificates of Occupancy:

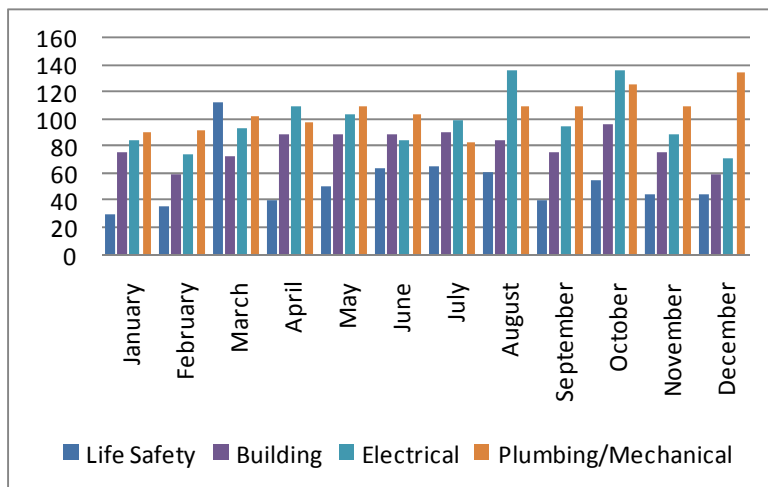


Age of Homes	Number Built
1600-1699	3
1700-1799	73
1800-1899	944
1900-1950	1576
1951-1955	442
1956-1960	767
1961-1965	426
1966-1970	158
1971-1975	372
1976-1980	380
1981-1985	578
1986-1990	821
1991-1995	278
1996-2000	558
2001-2005	792
2006-2010	349
2011-2015	70

Monthly Total Construction Value:



Monthly Inspections by Type:



AN AVERAGE OF 91 BURN PERMITS WERE ISSUED, A MONTH, IN 2012 TO DOVER RESIDENTS, A DECREASE FROM 93 IN 2011.

Detailing Dover, Demographically



Dover is served by:

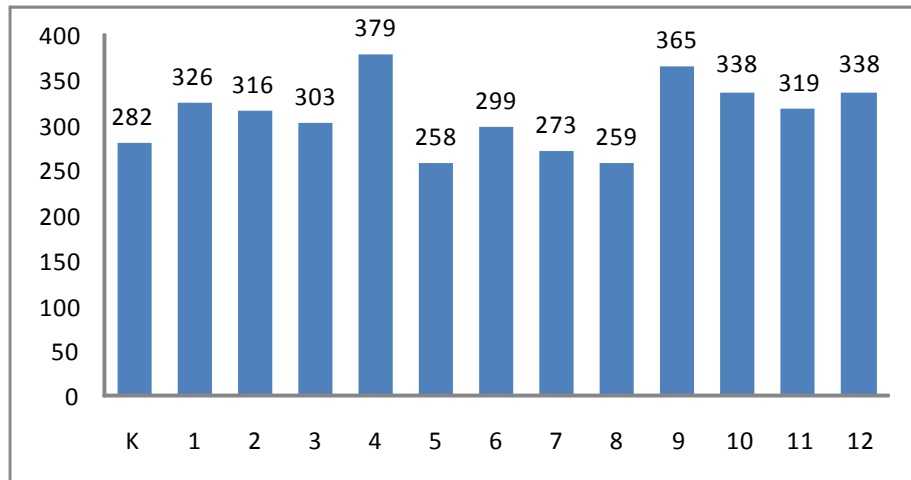
- three public elementary schools,
- one public middle school
- one public high school.

Dover High is host to a regional Career Technical Center, offering hands on training in various trades, and in 2005 it was named a New Hampshire School of Excellence.

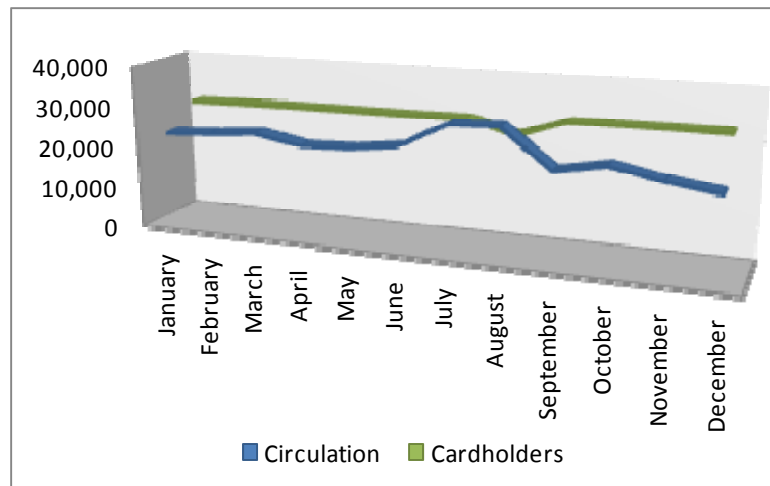
Additionally, there are two private high schools, a private elementary school and a charter high school.

“AN AVERAGE OF 610 PEOPLE A DAY VISITED THE LIBRARY, WHICH WAS OPEN AN AVERAGE OF 25 DAYS A MONTH, IN 2012”

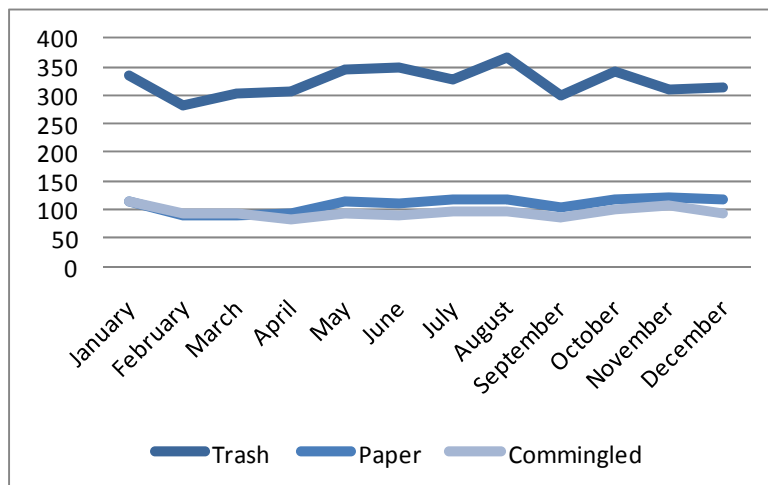
Public Educational Enrollment School Year 2012-13



Library Usage:

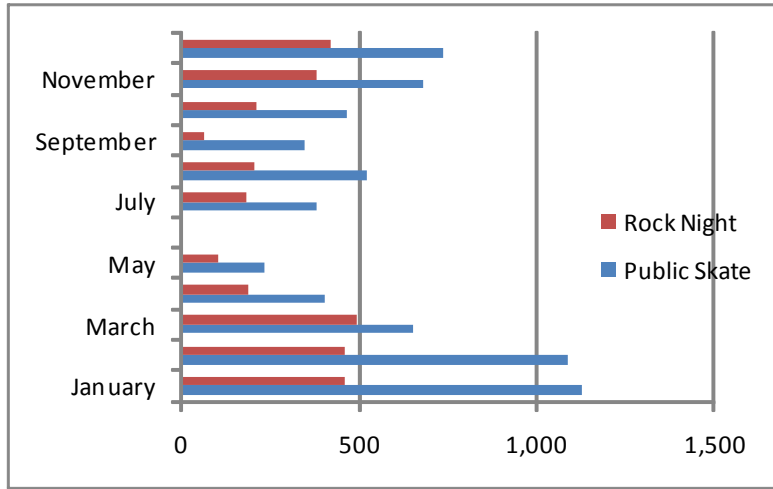


Curbside Solid Waste/Recycling Tons Collected:



Statistics from Calendar Year 2012

Dover Ice Arena Usage:

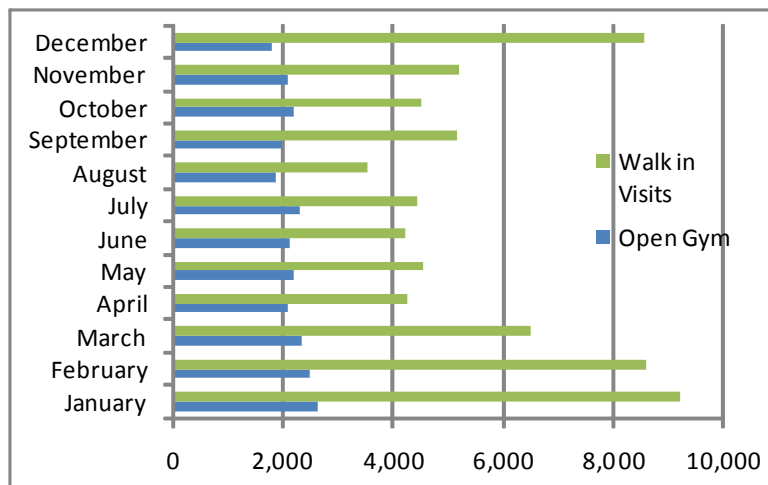


Walk In Visitors		
	Arena	Indoor Pool
January	31,318	7,233
February	33,910	7,142
March	25,584	8,054
April	10,217	7,585
May	8,772	6,425
June	6,432	5,234
July	12,550	7,654
August	13,020	2,634
September	14,177	6,574
October	22,414	9,166
November	27,241	7,324
December	31,297	7,624

Senior Center Usage

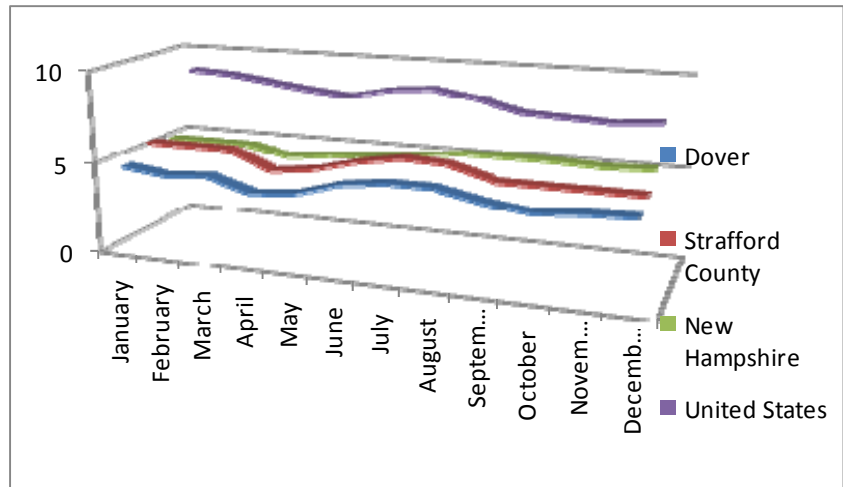
	2010	2011	2012
Memberships	500	489	513
Participants on Trips	780	782	868
Daily Game/Class Participants	9,225	9,056	10,218
Walk ins, no particular activity	7,901	8,428	11,009
Total Number of Visitors	18,814	19,504	25,267

McConnell Center Recreation Usage:



Detailing Dover, Demographically

Unemployment Percentage Rates:



EMPLOYMENT & WAGES

Annual Average 2001 2011
Covered Employment

Goods Producing Industries

Average Employment 2,858 1,318
Average Weekly Wage \$779 \$1,374

Service Providing Industries

Average Employment 10,425 13,491
Average Weekly Wage \$599 \$995

Total Private Industry

Average Employment 13,283 14,809
Average Weekly Wage \$638 \$1,029

Government (Federal, State, and Local)

Average Employment 1,789 1,777
Average Weekly Wage \$589 \$756

Total, Private plus Government

Average Employment 15,072 16,586
Average Weekly Wage \$632 \$999

Welfare Usage (CY 2010: 2012)

	2010	2011	2012
Number of Contacts (walk-ins only)	6,755	6,227	6,143
# of Cases Assisted	1,953	1,860	1,927
Case Expenditures	\$500,179	\$570,829	\$630,157

Labor Force (Annual Average)

	2001	2011
Civilian Labor Force	16,159	18,149
Employed	15,684	17,319
Unemployed	475	830

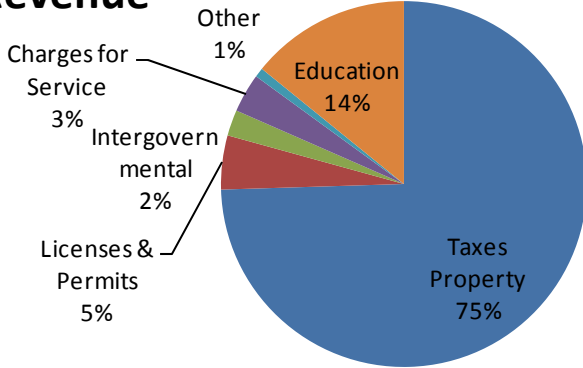
Annual Income (Adjusted for Inflation)

Per capita income	\$31,795
Median family income	\$80,994
Median household income	\$57,083
Median Earnings, full-time, year-round workers	
Male	\$52,604
Female	\$37,754
Families below the poverty level	6.70%

Statistics from Calendar Year 2012

Municipal Budget FY13

Revenue

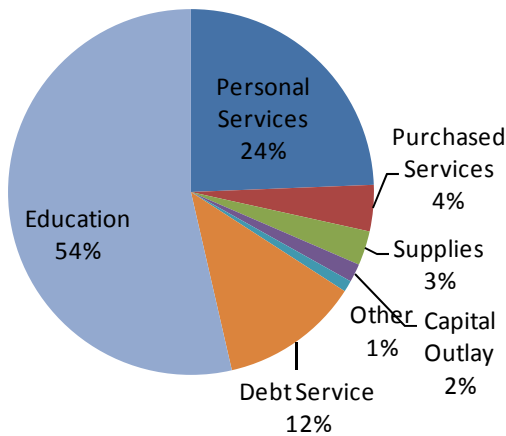


	FY11	FY12	FY13
Tax Rate	\$23.75	\$25.12	\$25.52
Water Rate	\$3.93	\$3.97	\$4.36
Sewer Rate	\$5.04	\$5.43	\$5.78

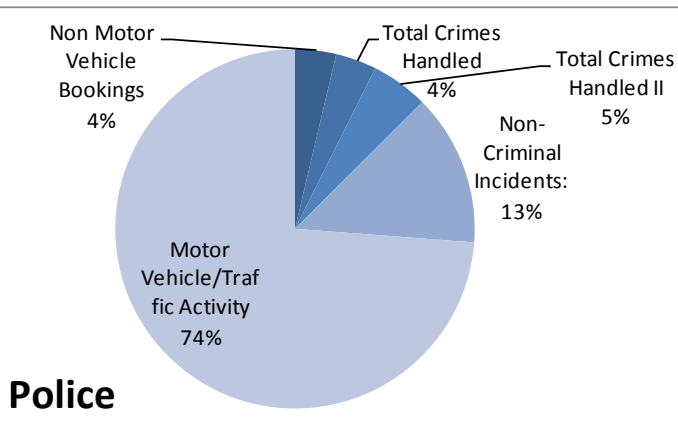
of Full Time Equivalent Employees:

Department	
Community Services	65
Executive	8
Finance	21
Fire & Rescue	60
Library	13
Planning	6
Police	77
Public Welfare	3
Recreation	31
Total	283

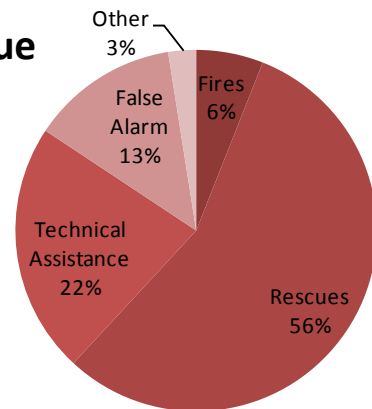
Expenses



Public Safety Service Call Areas: 2012

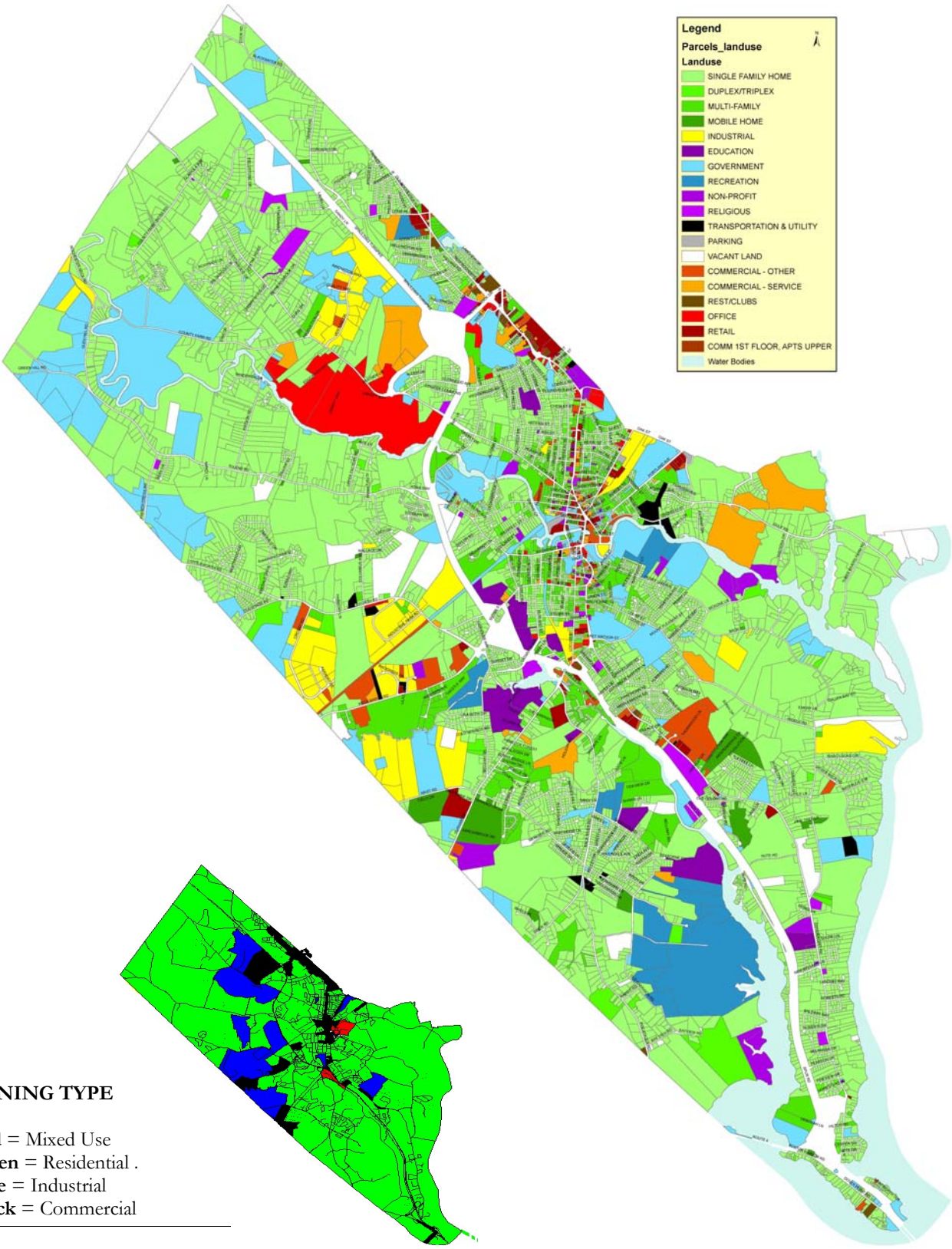


Fire/Rescue



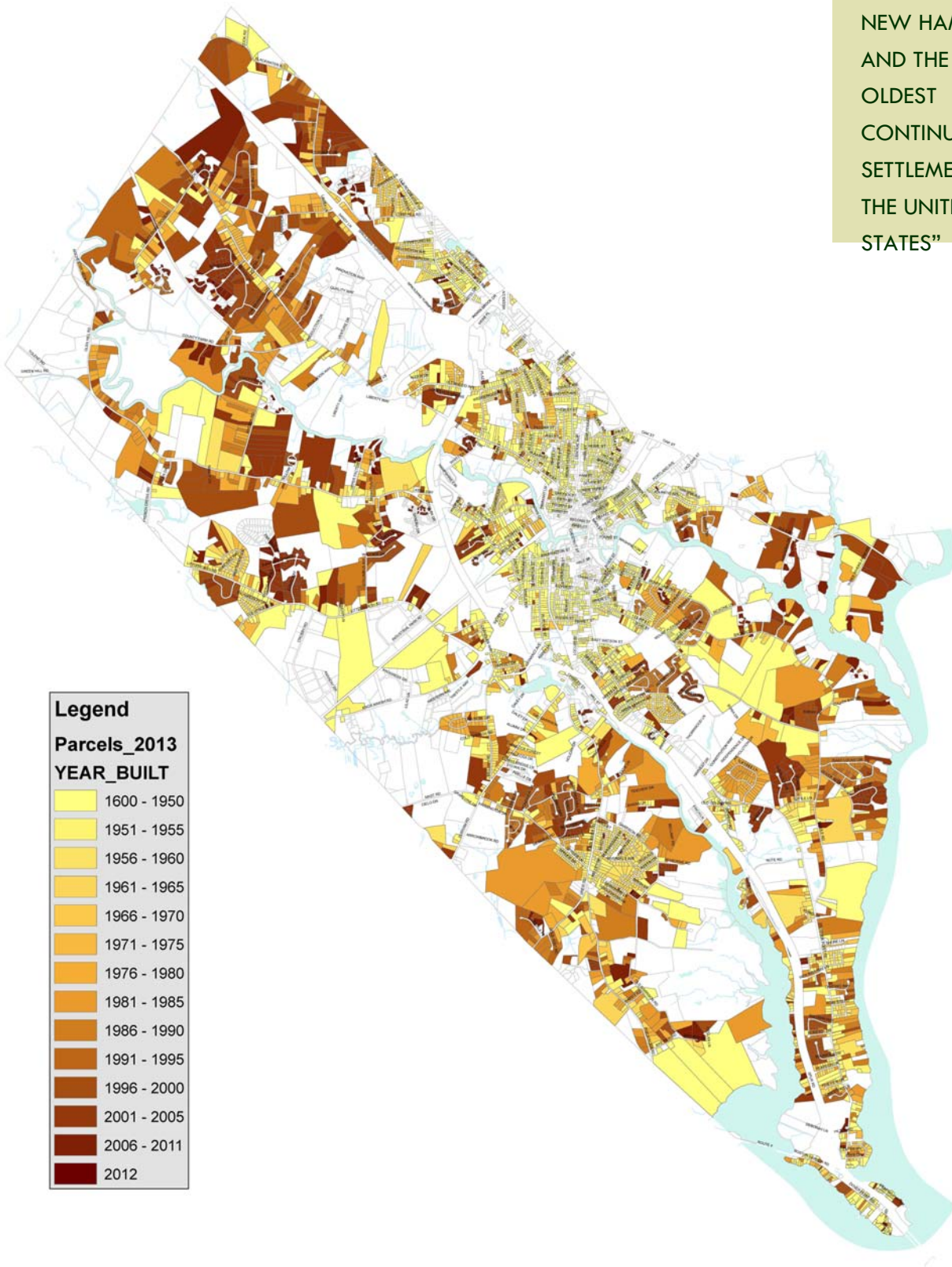
Detailing Dover, Demographically

Dover's Land Usage



Dover's Residential Development Over Time

“DOVER IS THE
OLDEST
SETTLEMENT IN
NEW HAMPSHIRE
AND THE 7TH
OLDEST
CONTINUOUS
SETTLEMENT IN
THE UNITED
STATES”



Legend
Parcels_2013
YEAR_BUILT

1600 - 1950
1951 - 1955
1956 - 1960
1961 - 1965
1966 - 1970
1971 - 1975
1976 - 1980
1981 - 1985
1986 - 1990
1991 - 1995
1996 - 2000
2001 - 2005
2006 - 2011
2012



Dover: First in New Hampshire, First With You

A COMMUNITY PROFILE

Prepared By:

Department of Planning and
Community Development
Municipal Building
288 Central Avenue
Dover, NH 03820

Phone: 603-516-6008
c.parker@dover.nh.gov
www.dover.nh.gov

Dover's Strategic Priorities: Dover's Focus Areas:

- Obtain a financially-and environ-mentally- reasonable permit for the wastewater treatment plant
- Increase non-property-tax revenue sources and control expenses
- Enhance communication to all stake-holders to engender public trust
- Foster Economic Development
- Public Education
- Economic Development
- Public Safety
- Public Infrastructure
- Fiscal Stewardship

Dover's Core Values:

- Customer-Focused Service – We engage our customers, with a focus on listening to and supporting their needs, anticipating and delivering high quality services and ensuring their satisfaction.
- Integrity – We conduct ourselves at all times in a manner that is ethical, legal and professional, with the highest degree of honesty, respect and fairness.
- Innovation – We develop creative solutions and share leading practices that enhance the value of services provided for our customers.
- Accountability – We promote openness and transparency in our operations ensuring that we are accountable for our actions at all times.
- Stewardship – We serve as trusted stewards of the public's financial, environmental, social and physical resources always seeking to responsibly utilize, conserve and sustain for current and future generations.

Dover Has:

- 30,168 People
- 28.87 square miles of land
- 50 miles of river frontage
- An average elevation of 80'
- 6 Wards
- Avg # of residents per ward: 5,000
- Over 900 fire hydrants
- Over 130 miles of public streets
- Over 70 acres of parkland
- Three elementary schools, one middle school, one high school
- Services: Full emergency services (police, fire and ambulance); city water and sewer; public and private solid waste disposal; a recycling program; electricity and natural gas through utilities.

