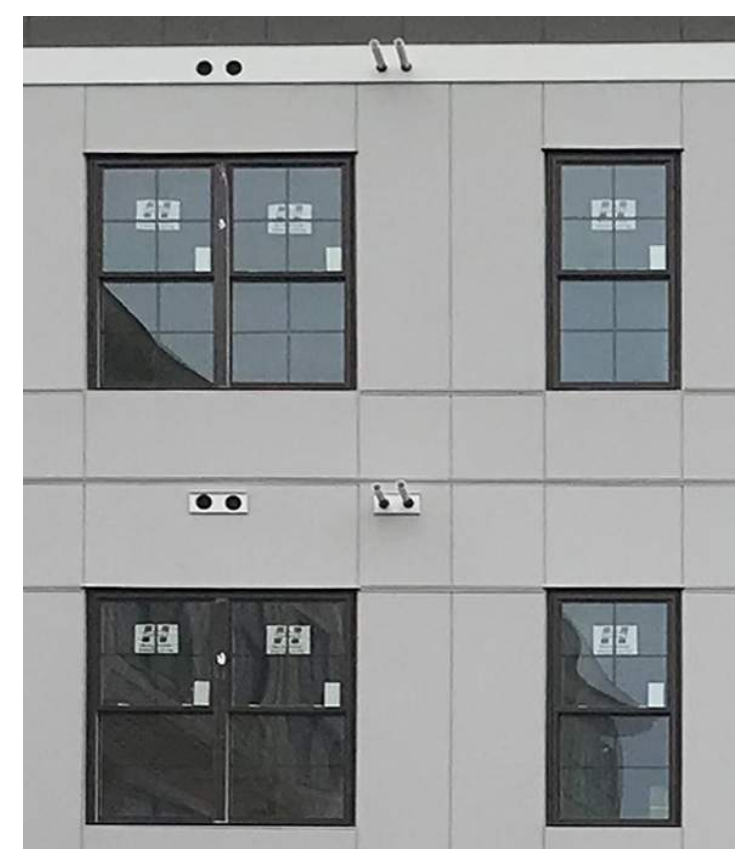
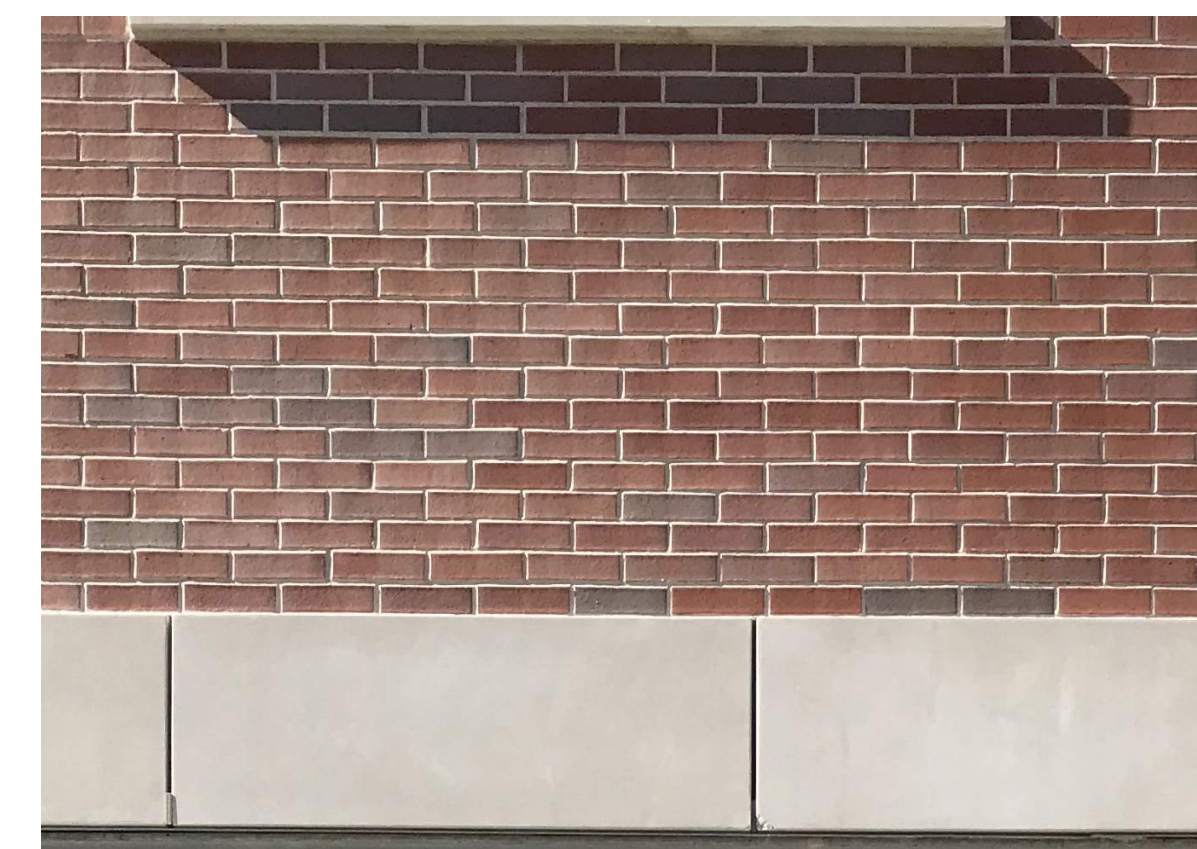
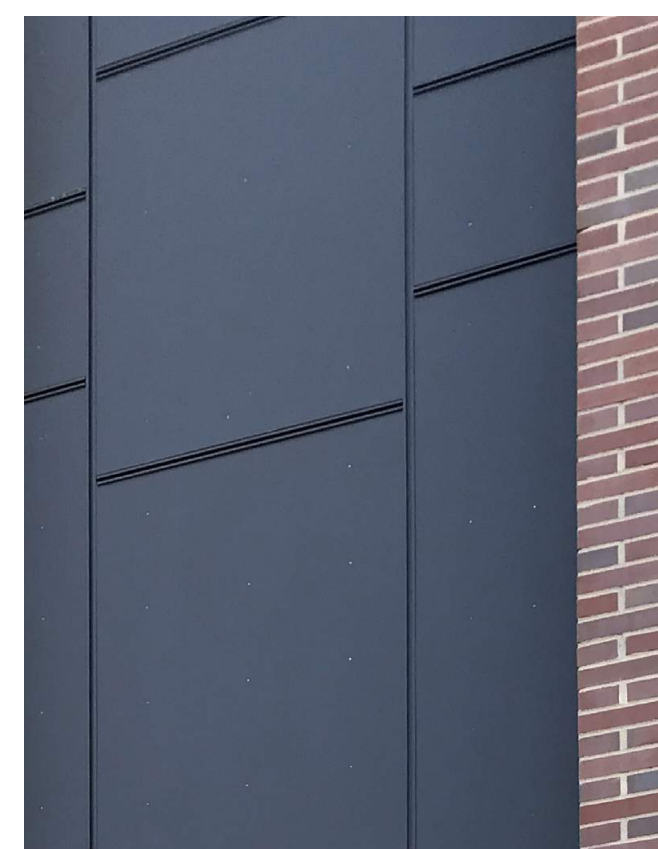


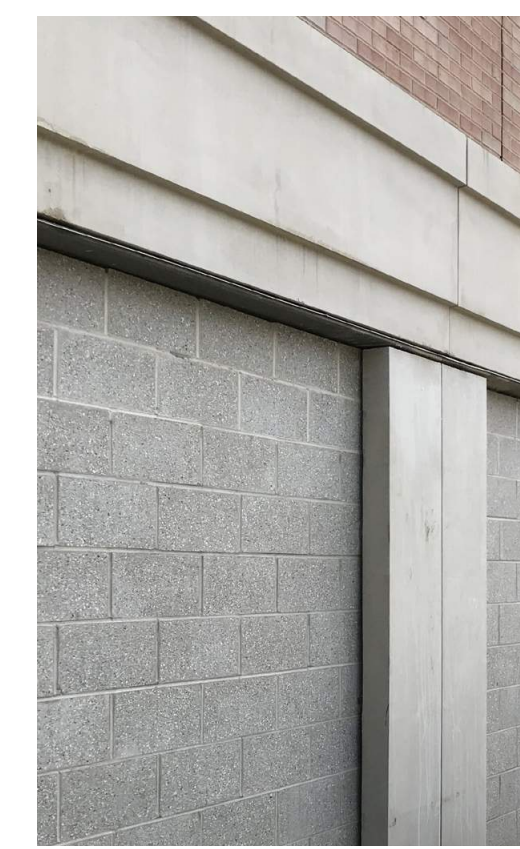

**woodburn
& company**
 LANDSCAPE ARCHITECTURE
Since 1994 reflecting your vision.
 103 Kent Place Newmarket, New Hampshire 03857 Ph.603-659-5949



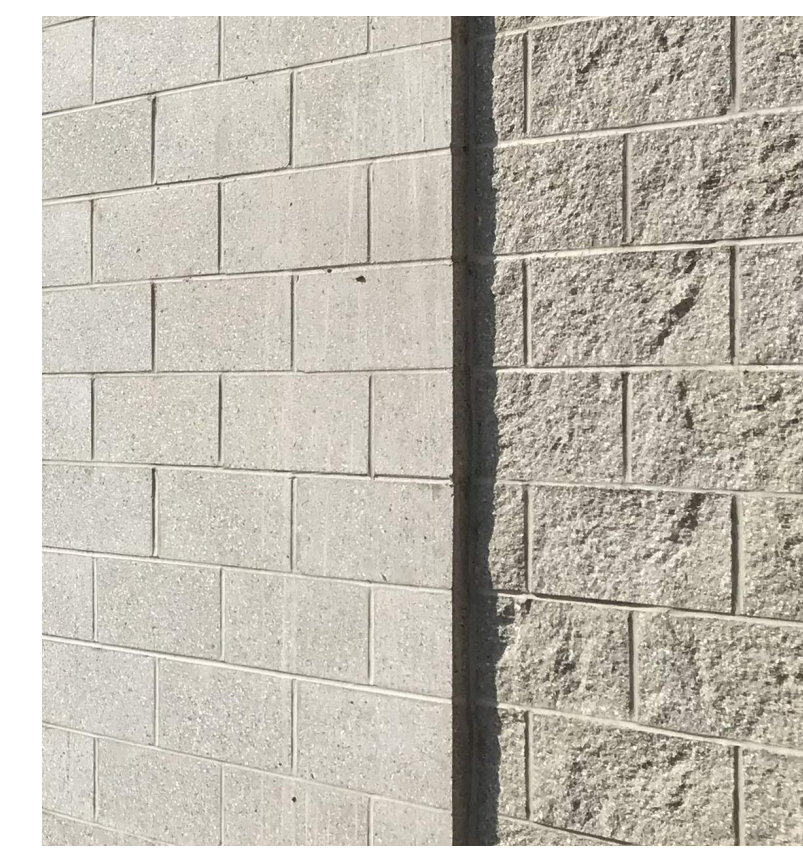
FIBER CEMENT PANEL AND TRIM WORK



FULL WYTHE BRICK VENEER



CAST STONE AND CMU BASE



RIVER STREET FACADE AND PROJECT MATERIAL PALETTE

DURABLE AND ATTRACTIVE BUILDING MATERIALS TO BE STRATEGICALLY APPLIED ALONG BUILDING FACADE.

MATERIALS AND DETAILING WILL BE SIMILAR TO THE DOVER ORPHEUM PROJECT AT 104 WASHINGTON STREET (IMAGES AT LEFT).

RIVER STREET ELEVATION
COCHECHO DEVELOPMENT - DOVER, NH

01.15.2020

EMBARC
ARCHITECTURE + DESIGN