



FairPoint
communications

2011 FORUM SERIES

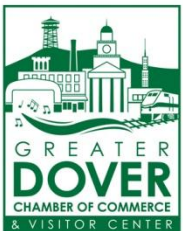
State *of the* City Address

Introduced by
Mayor Scott Myers

and presented by
City Manager J. Michael Joyal, Jr.

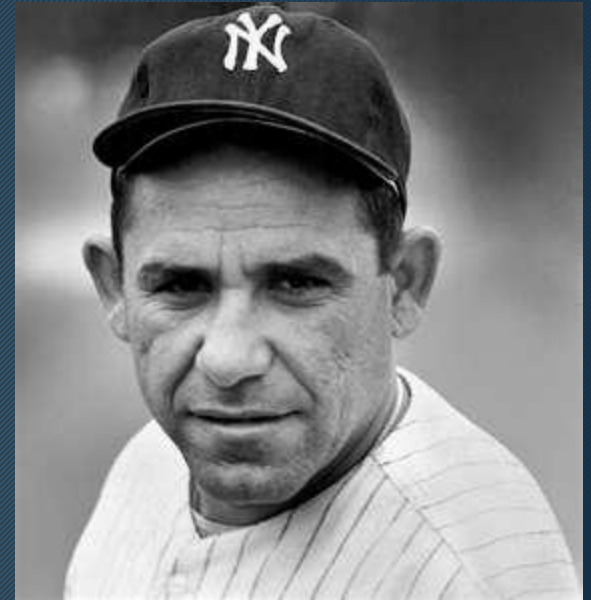
Hosted by

The Greater Dover Chamber of Commerce



“If you don’t know where you
are going you may end up
somewhere else”

- Yogi Berra



State of our City



“A work in progress with boundless opportunities for continuing success”



Issues Driving Change

The Economy

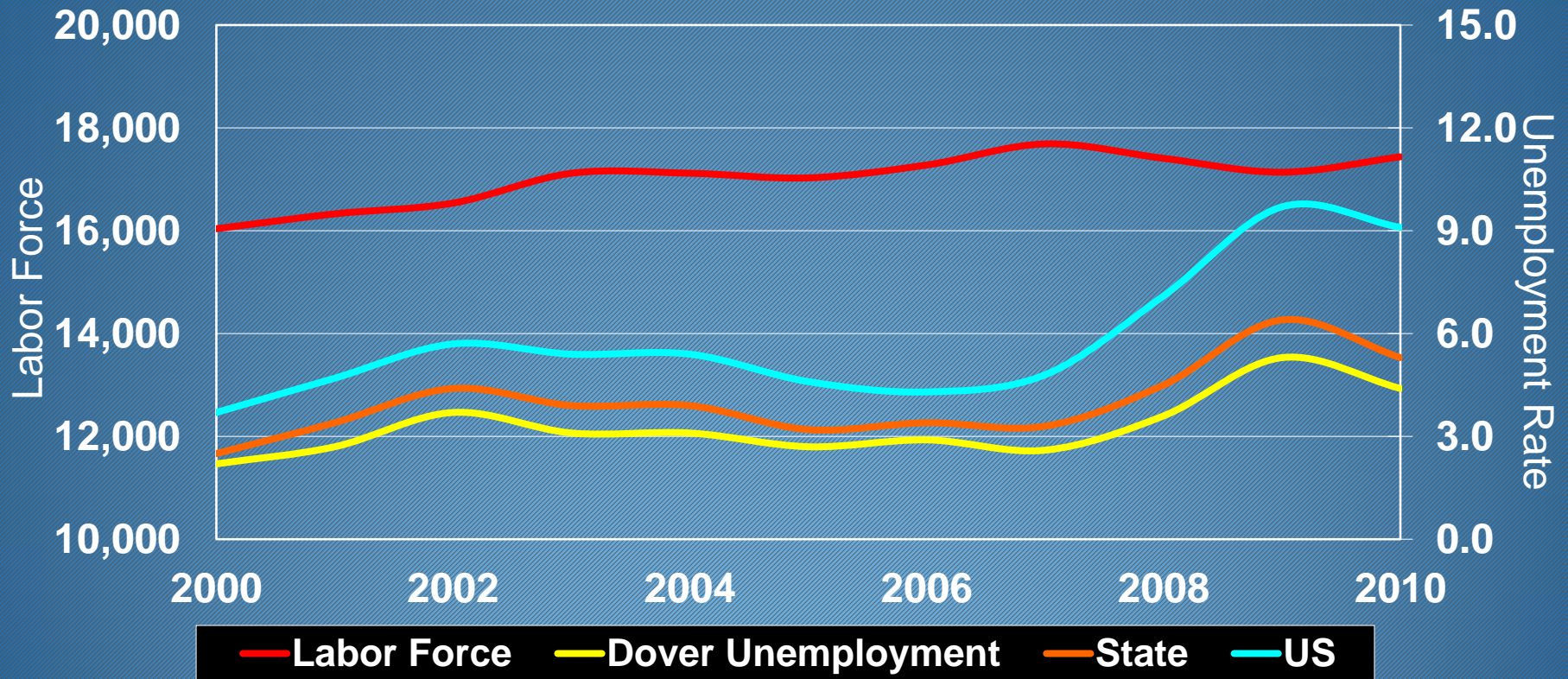
Our State fiscal crisis

Demographic change

Scarce resources

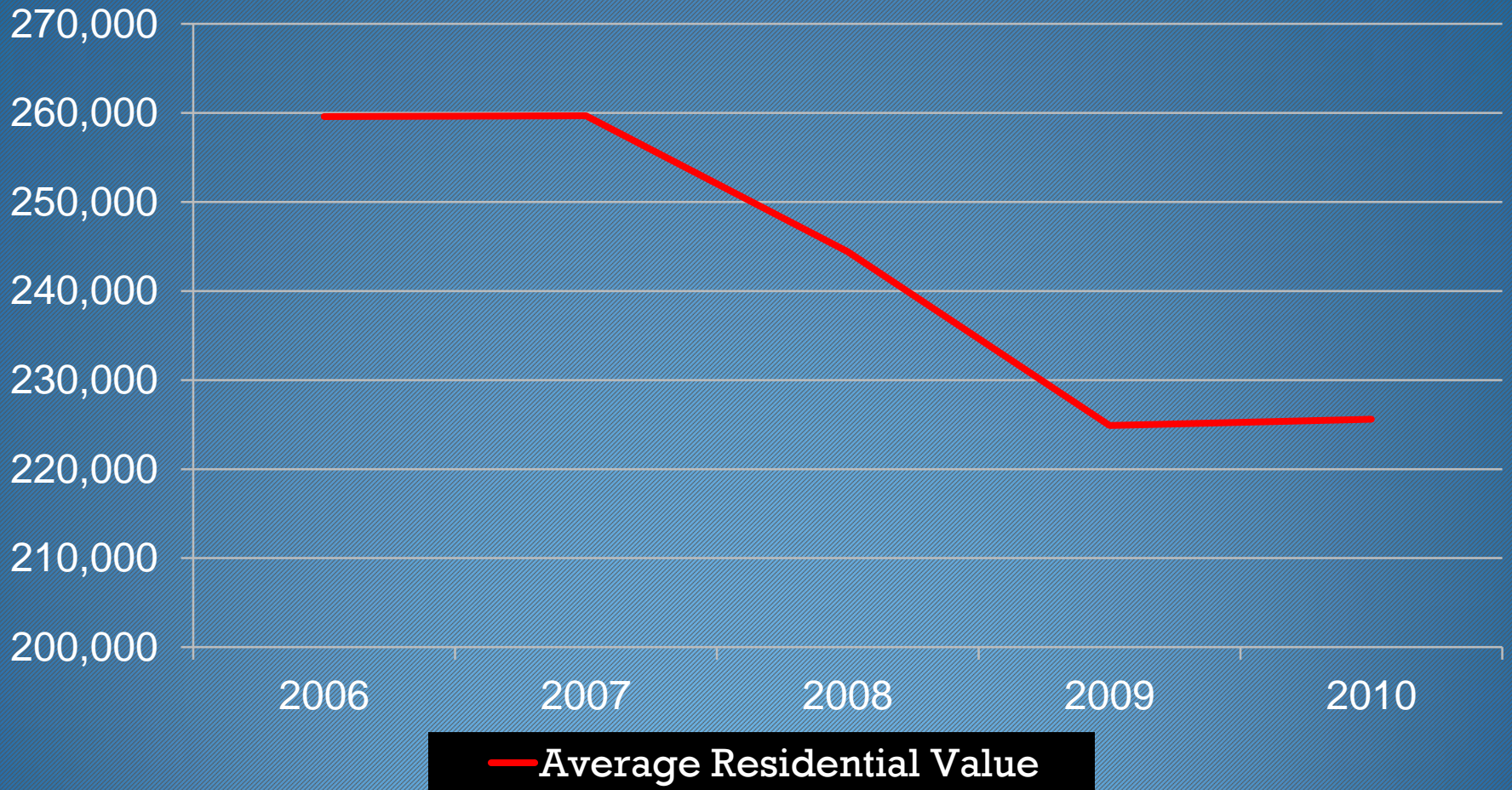
New Media and technology

Labor force & unemployment



Source: US Bureau of Labor Statistics

Declining Home Values



Source: Report of Tax Assessor

Downshifting State Fiscal Crisis



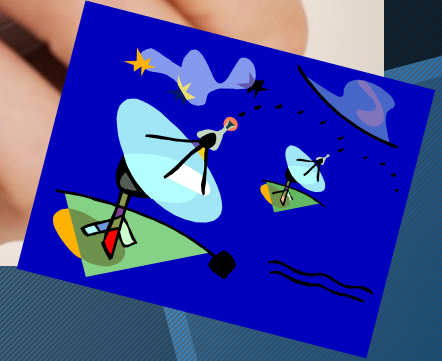
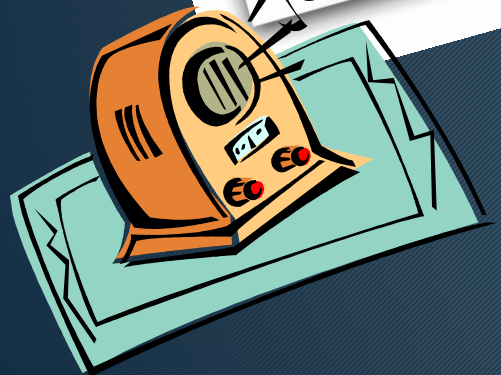
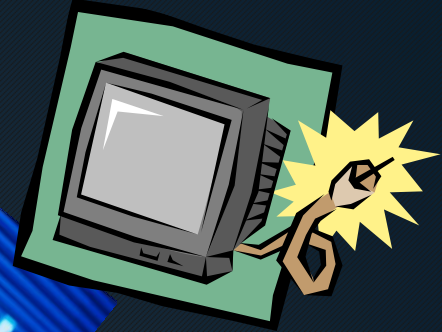
Increasing population



Service Demands



Communication Needs



Accomplishments & Ongoing Initiatives

- Economic Development
- Facility/Infrastructure Improvements
- Transportation Projects
- Public Parking System Changes
- Great Bay Water Quality

Financial Policies

- Stabilization Funds
- Revenues
- CIP and Debt Parameters
- Budget Guidance
- Policy Implementation



FY2012 Proposed Budget

General Fund	Proposed	\$ Change	% Change
City	\$33,932,751	\$1,049,985	3.2%
School	46,109,099	1,394,978	3.1%
County	7,051,080	17,809	0.3%
Total	\$87,092,930	\$2,462,772	2.9%

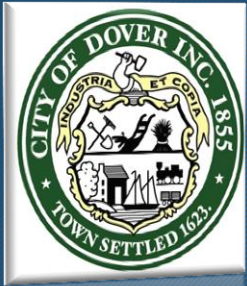


Property Tax Bill

Mr. and Mrs. John Q. Taxpayer

City of Dover, NH

Average Residential Assessment = \$225,616	FY11 Tax	\$ Change	% Change
City	\$2,071	\$56	2.8%
School	\$2,892	\$158	5.8%
County	\$607	(\$2)	(0.5%)
Total Property Tax Bill	\$5,570	\$212	4.0%



Property Tax Bill

Mr. and Mrs. John Q. Taxpayer

w/ Potential State Downshifting

Average Residential Assessment = \$225,616	FY11 Tax	\$ Change	% Change
City	\$2,175	\$160	7.9%
School	\$3,023	\$289	10.4%
County	\$607	(\$2)	(0.5%)
Total Property Tax Bill	\$5,805	\$447	8.3%

2009 Property Tax Per Capita

Portsmouth	\$3,109
Londonderry	\$2,654
Merrimack	\$2,421
Laconia	\$2,388
Keene	\$2,367
Salem	\$2,268
Derry	\$2,088
Concord	\$2,072
<u>Dover</u>	<u>\$2,006</u>
Nashua	\$1,916
Rochester	\$1,593
Manchester	\$1,586

“Even if you are on the right track, you will get run over if you just sit there.”



- Will Rogers

