

Willand Pond Outlet Area Development Over Time

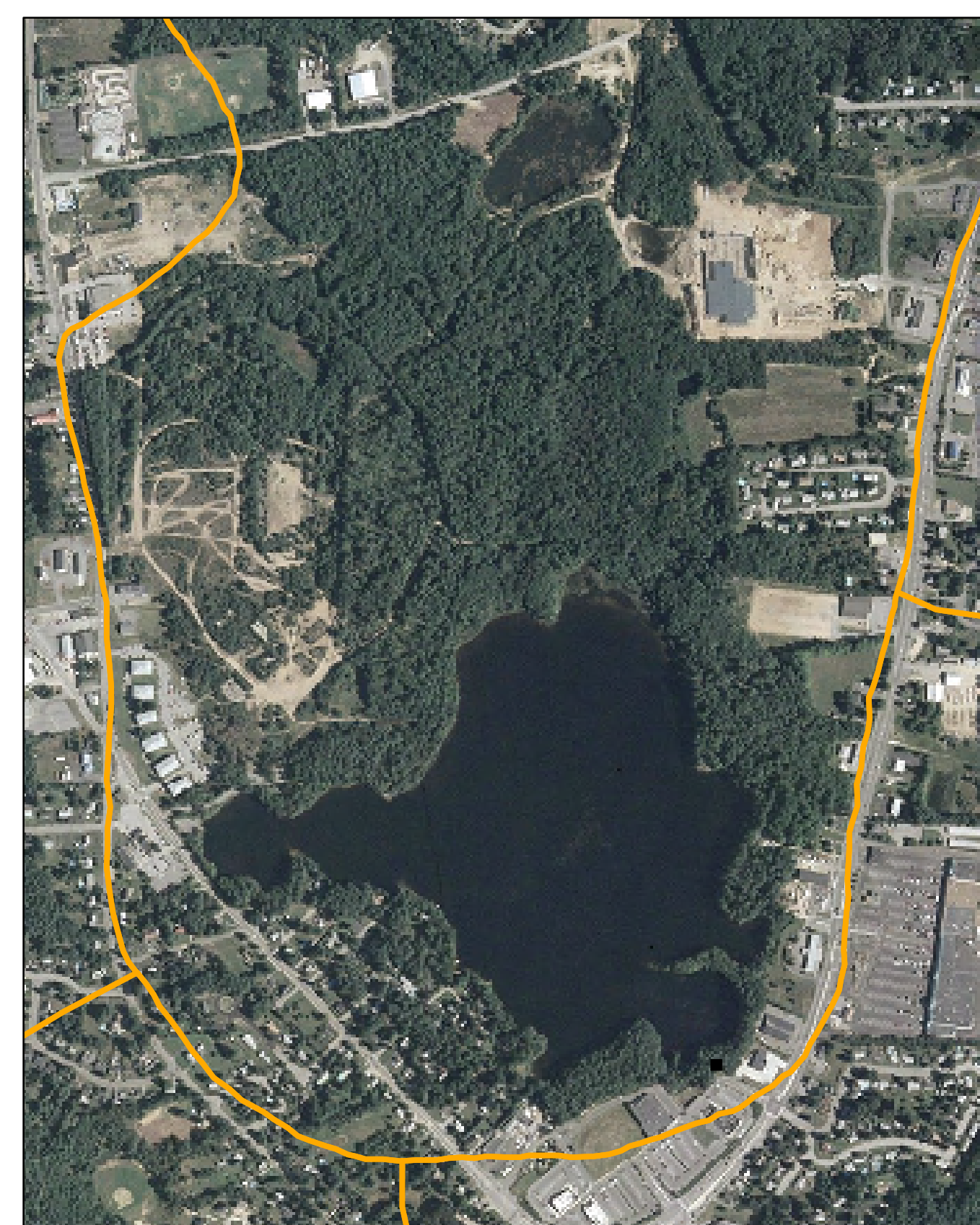
1962





1999 - Leaf Off

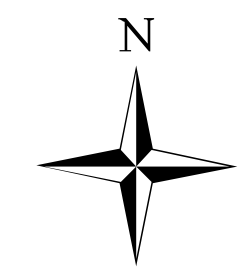


2003 - Leaf On



Legend

-  Topographic Watershed Divides
-  Hydric Soils



NOTES:

1998 Leaf Off - The photography used to create the 1998 DOQ's in New Hampshire was acquired in spring, 1998.

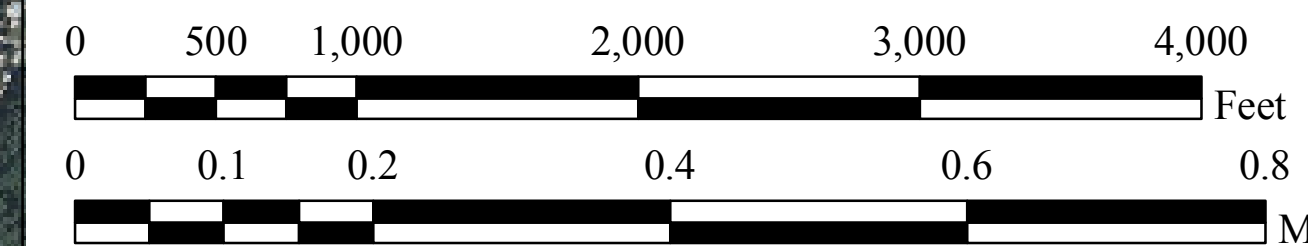
2003 Leaf On - This data layer comprises orthorectified imagery from the National Agricultural Imagery Program (NAIP). NAIP acquires ortho imagery during the agricultural growing seasons in the continental U.S. This is the 2003 photo series.

2006 Leaf Off - This data layer comprises orthorectified imagery flown for the south-eastern portion of New Hampshire.

April 25, 2007 - Rectified from low elevation oblique imagery taken by DSharples. Bottom two images are non-rectified. Scale slightly distorted.

Topographic Base Map - The digital raster graphic files ((DRGs) are scanned images of the US Geological Survey 7.5-minute quadrangle topographic maps.

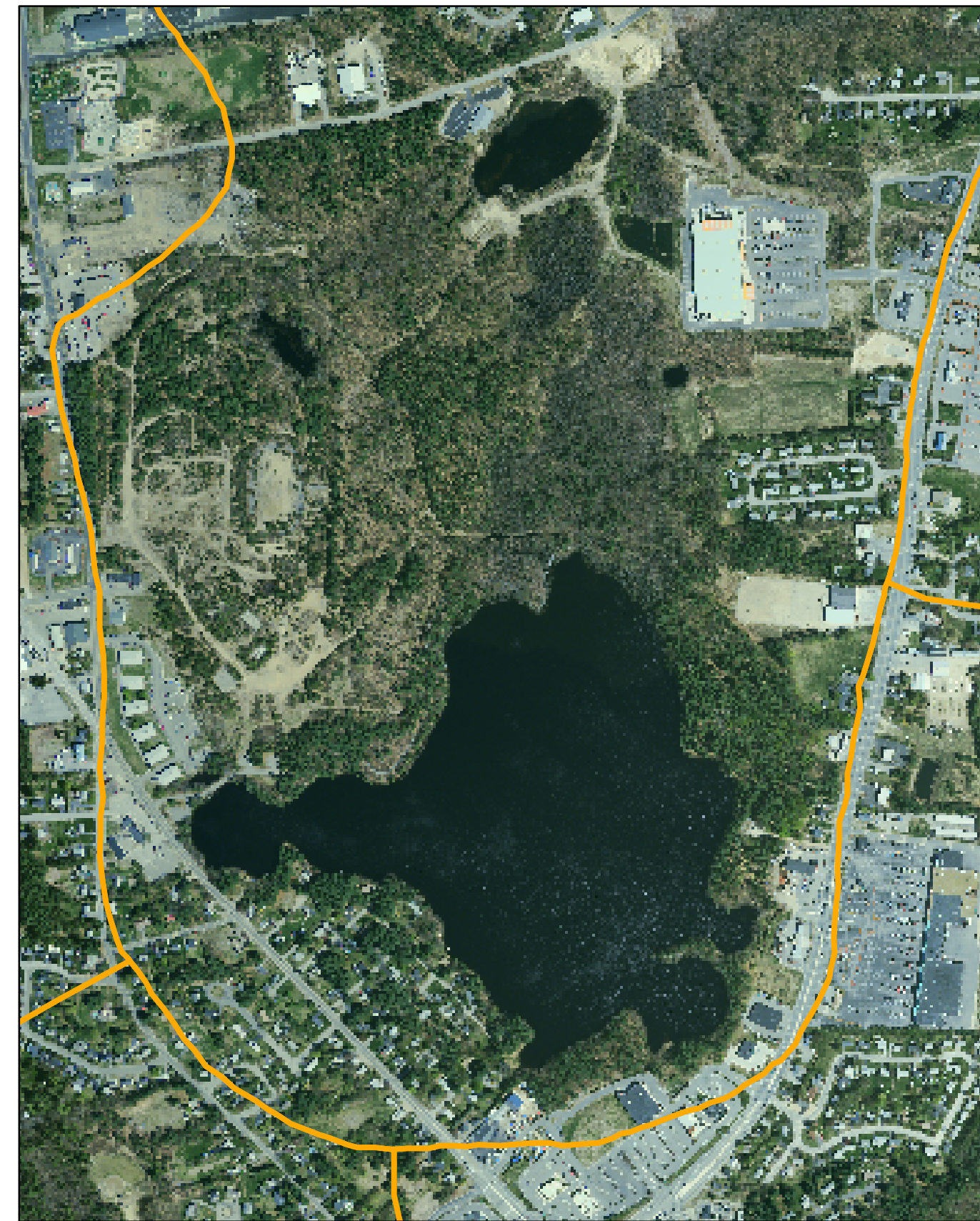
The coverages presented in this map are under constant revision as new sites or facilities are added. They may not contain all of the potential or existing sites or facilities. The Department is not responsible for the use or interpretation of this information, nor for any inaccuracies.



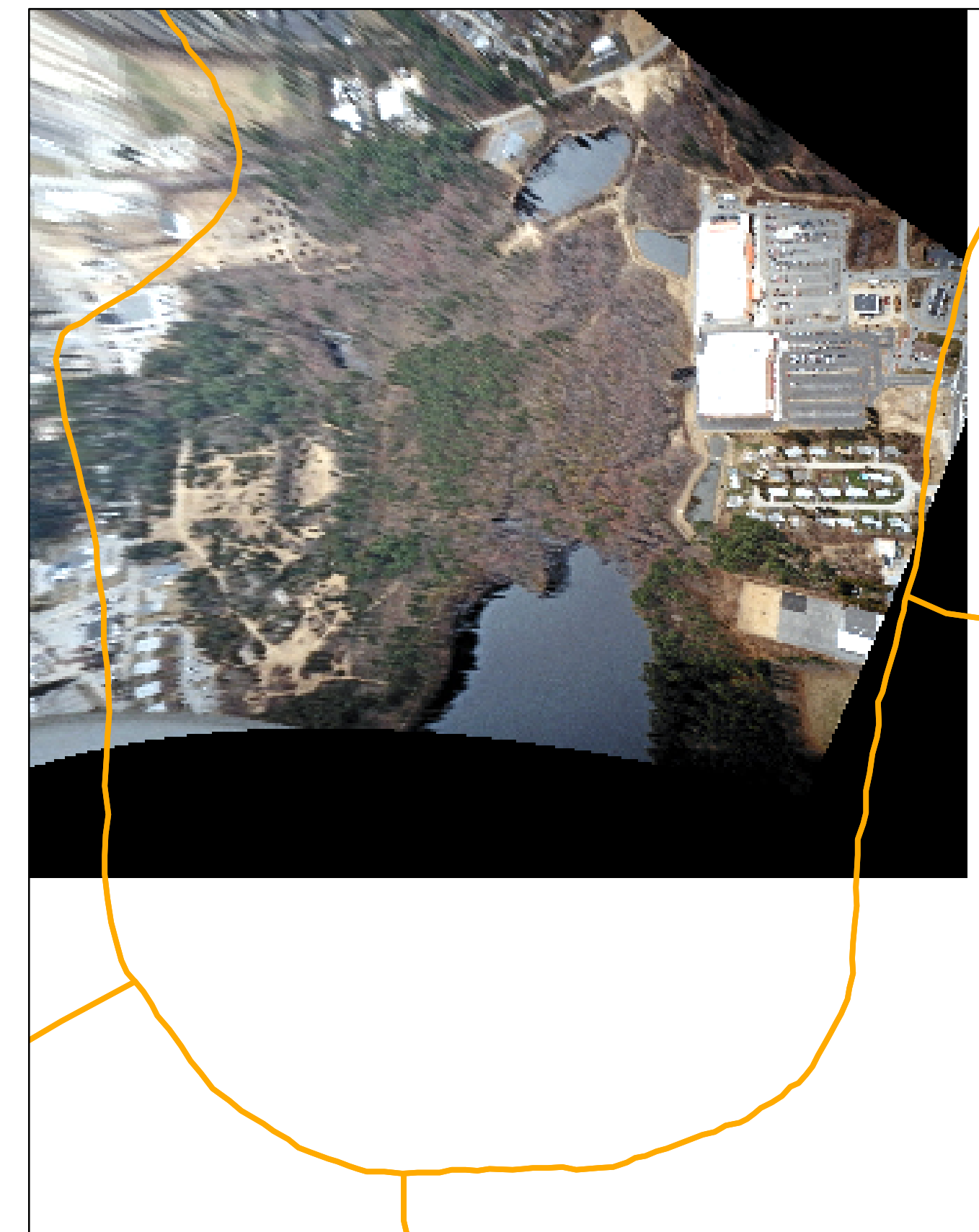
2006 - Leaf-off with Hydric Soils Overlay



2006- Leaf Off



April 25, 2007 - Rectified from low elevation oblique imagery.



Original for Photo Seen to the Left



Outlet Area from the North

