



---

# DOVER COMMUNITY TRAIL, PHASE IV

LOCAL CONCERNS MEETING

NICOLE FOX, PE

AMY JOHNSON, PE



# LOCAL CONCERNS MEETING AGENDA

- REVIEW PROJECT PROCESS
- REVIEW PROJECT AREA
- DISCUSS EXISTING CONDITIONS
- GATHER FEEDBACK ON ISSUES, CONCERNS, IDEAS



## PROJECT TEAM

- Donna Benton, City of Dover Project Manager
- Erin Bassegio, City of Dover Outreach Coordinator
- Tom Jameson, NHDOT Project Manager
- Nicole Fox, Fuss & O'Neill Project Manager
- Amy Johnson, Fuss & O'Neill Project Engineer



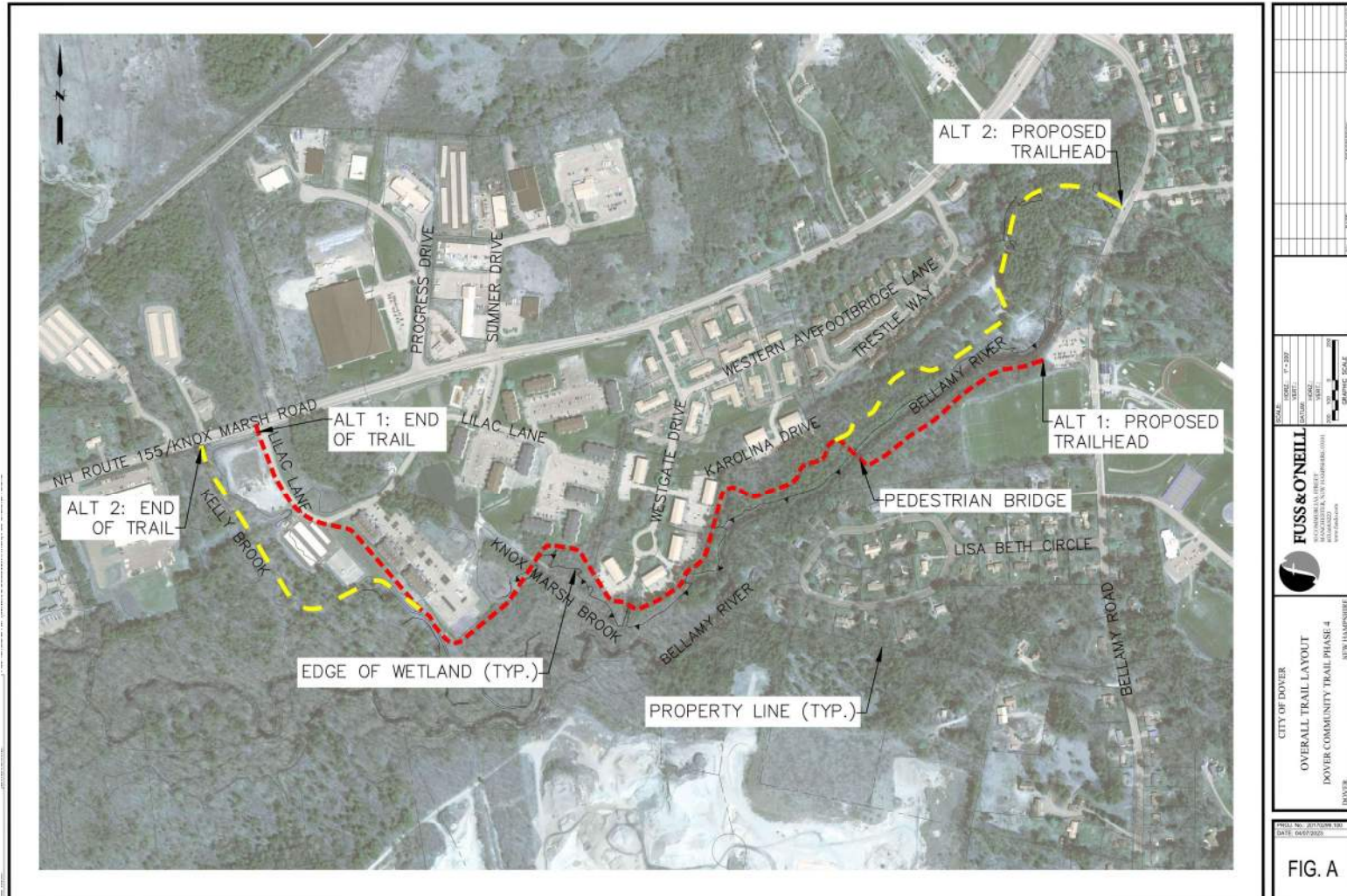
# PROJECT BACKGROUND

---

- Local Project Assistance (LPA) Process
  - City of Dover project through NHDOT with federal grant funds (80%) and local match (20%)
- Project Process
  - Engineering Study
  - Preliminary Plans
  - Construction Plans
  - Environmental Reviews
  - Right-of-Way Agreements
  - Bidding Process
  - Construction



# PROJECT LOCATION



SCALE: SHEET 1 OF 2 PROJECT: 20110200 DATE: 04/20/2022	DESCRIPTION: DATE: 04/20/2022
<b>FUSS &amp; O'NEILL</b> REGISTERED PROFESSIONAL ENGINEERS NEW HAMPSHIRE www.fussandoneill.com	GRAPHIC SCALE 0 50 100 FEET
CITY OF DOVER OVERALL TRAIL LAYOUT DOVER COMMUNITY TRAIL PHASE 4 DOVER	NEW HAMPSHIRE
FIG. A	

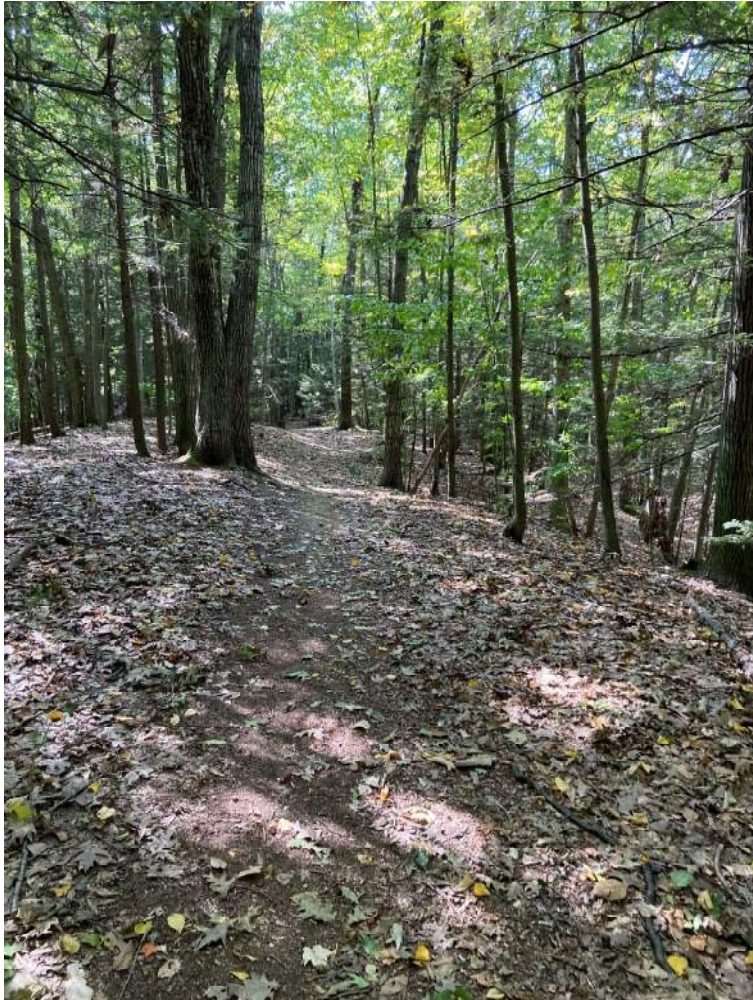
## ALT 2 TRAIL LOCATION NEAR DISC GOLF

---



## ALT I LOCATION BEHIND ATHLETIC FIELDS

---



## ALT I LOCATION NEAR BRIDGE OVER BELLAMY RIVER

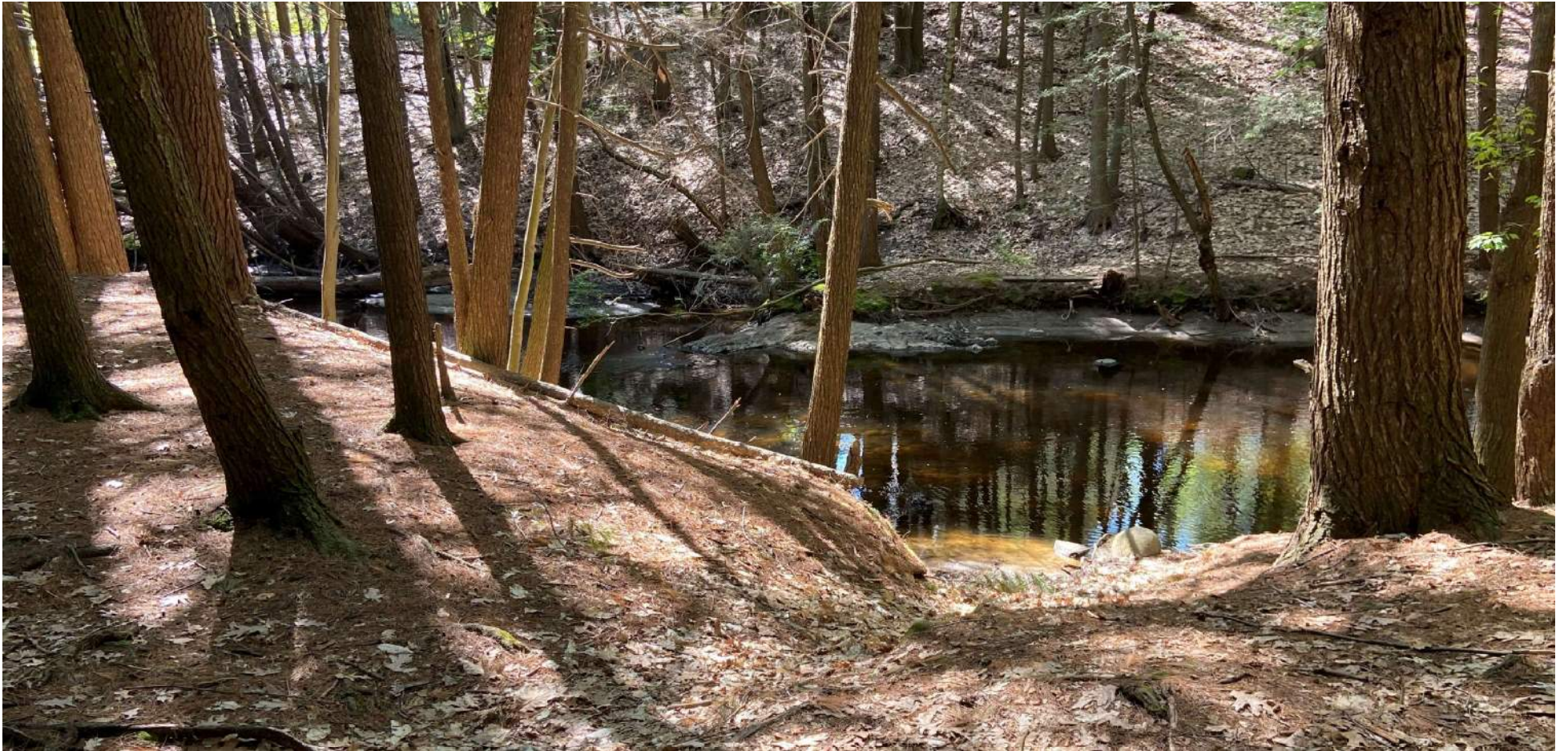
---





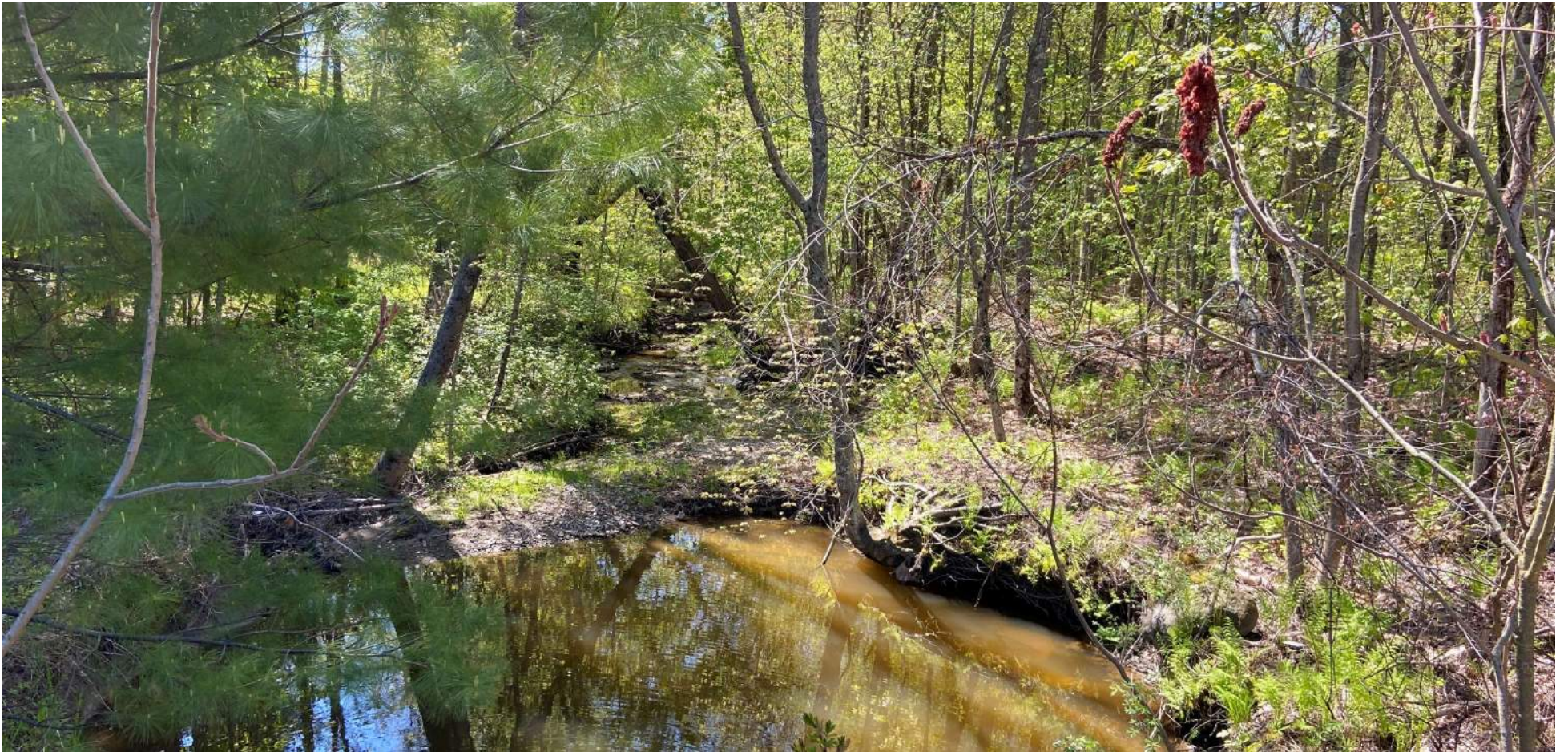
## ALT I LOCATION NEAR BRIDGE OVER BELLAMY RIVER

---



## WETLANDS NEAR WESTERN END OF ALT 2

---



## ALT 1 & 2 LOCATION WEST OF BELLAMY PARK

---



## ALTS 1 & 2 LOCATION BEHIND WHITE CLIFFS AT DOVER

---



# ALT I LOCATION NEAR POWER LINE EASEMENT AND LILAC GARDEN

---



# ALT I ON-STREET CONNECTION TO KNOX MARSH RD ON LILAC LN

---





# PUBLIC INPUT

Contact: Erin Bassegio  
E.Bassegio@dover.nh.gov



FUSS & O'NEILL

[www.fando.com](http://www.fando.com)



OUR PARK  
IN THE SP  
MAINTAIN PHYSICAL  
DO NOT LEAVE  
STAY HOME IF  
NEEDS