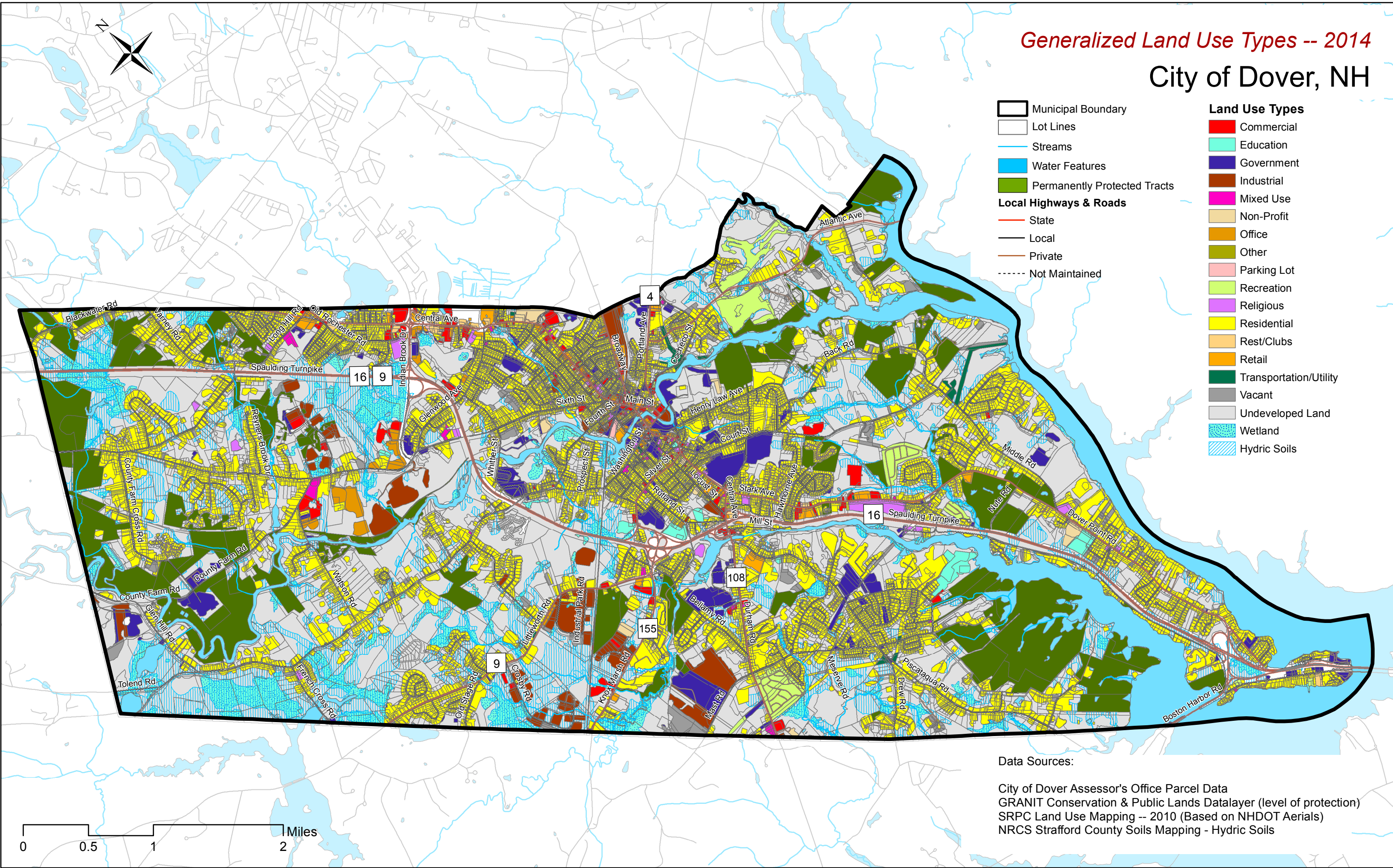


Generalized Land Use Types -- 2014

City of Dover, NH



- | | |
|-----------------------------------|------------------------|
| Municipal Boundary | Land Use Types |
| Lot Lines | Commercial |
| Streams | Education |
| Water Features | Government |
| Permanently Protected Tracts | Industrial |
| Local Highways & Roads | Mixed Use |
| State | Non-Profit |
| Local | Office |
| Private | Other |
| Not Maintained | Parking Lot |
| | Recreation |
| | Religious |
| | Residential |
| | Rest/Clubs |
| | Retail |
| | Transportation/Utility |
| | Vacant |
| | Undeveloped Land |
| | Wetland |
| | Hydric Soils |

Data Sources:
 City of Dover Assessor's Office Parcel Data
 GRANIT Conservation & Public Lands Datalayer (level of protection)
 SRPC Land Use Mapping -- 2010 (Based on NHDOT Aerials)
 NRCS Strafford County Soils Mapping - Hydric Soils

0 0.5 1 2 Miles