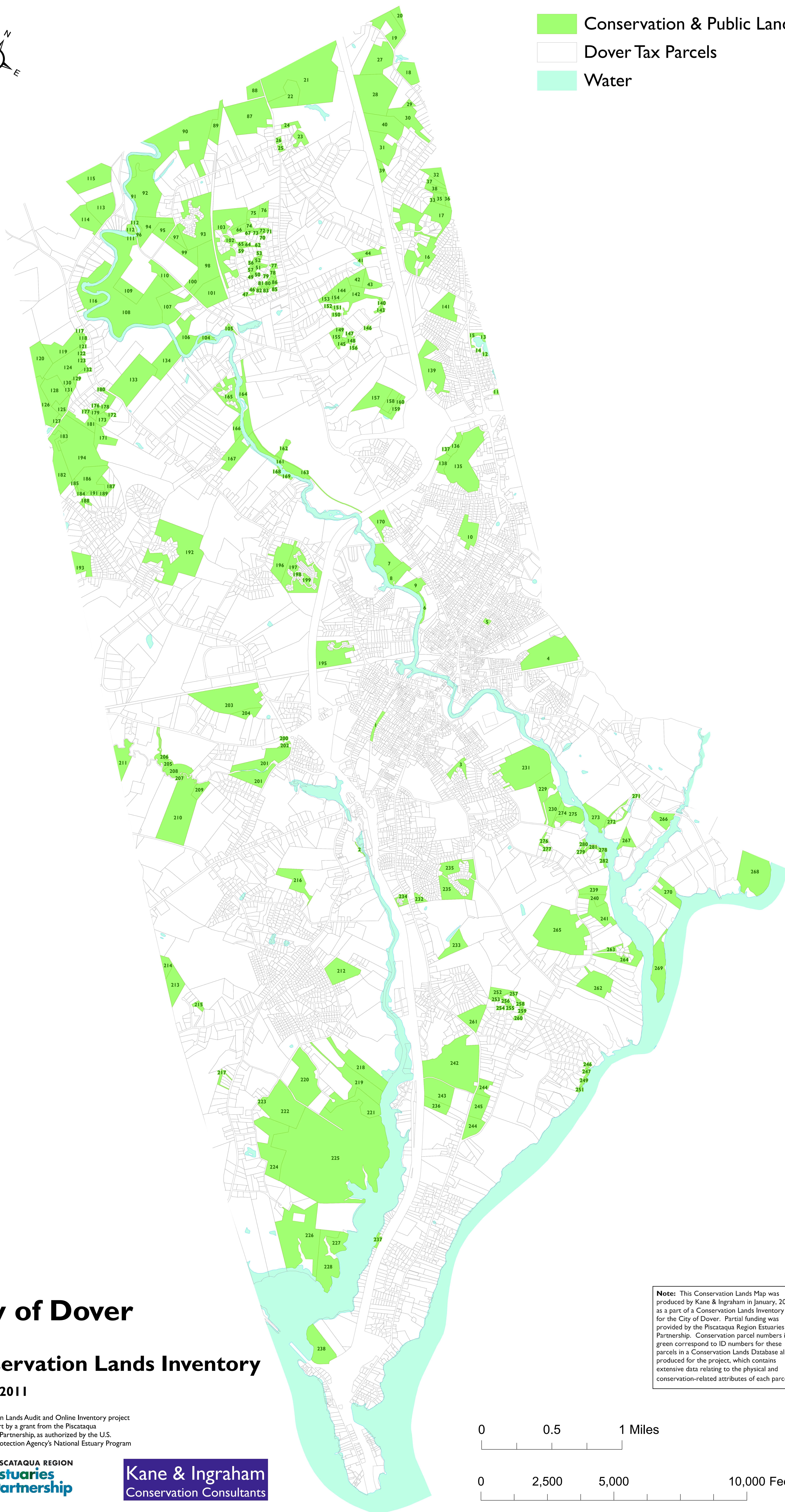


- Conservation & Public Lands
- Dover Tax Parcels
- Water



City of Dover

Conservation Lands Inventory

January 2011

This Conservation Lands Audit and Online Inventory project was funded in part by a grant from the Piscataqua Region Estuaries Partnership, as authorized by the U.S. Environmental Protection Agency's National Estuary Program



Note: This Conservation Lands Map was produced by Kane & Ingraham in January, 2011 as a part of a Conservation Lands Inventory for the City of Dover. Partial funding was provided by the Piscataqua Region Estuaries Partnership. Conservation parcel numbers in green correspond to ID numbers for these parcels in a Conservation Lands Database also produced for the project, which contains extensive data relating to the physical and conservation-related attributes of each parcel.

0 0.5 1 Miles

0 2,500 5,000 10,000 Feet