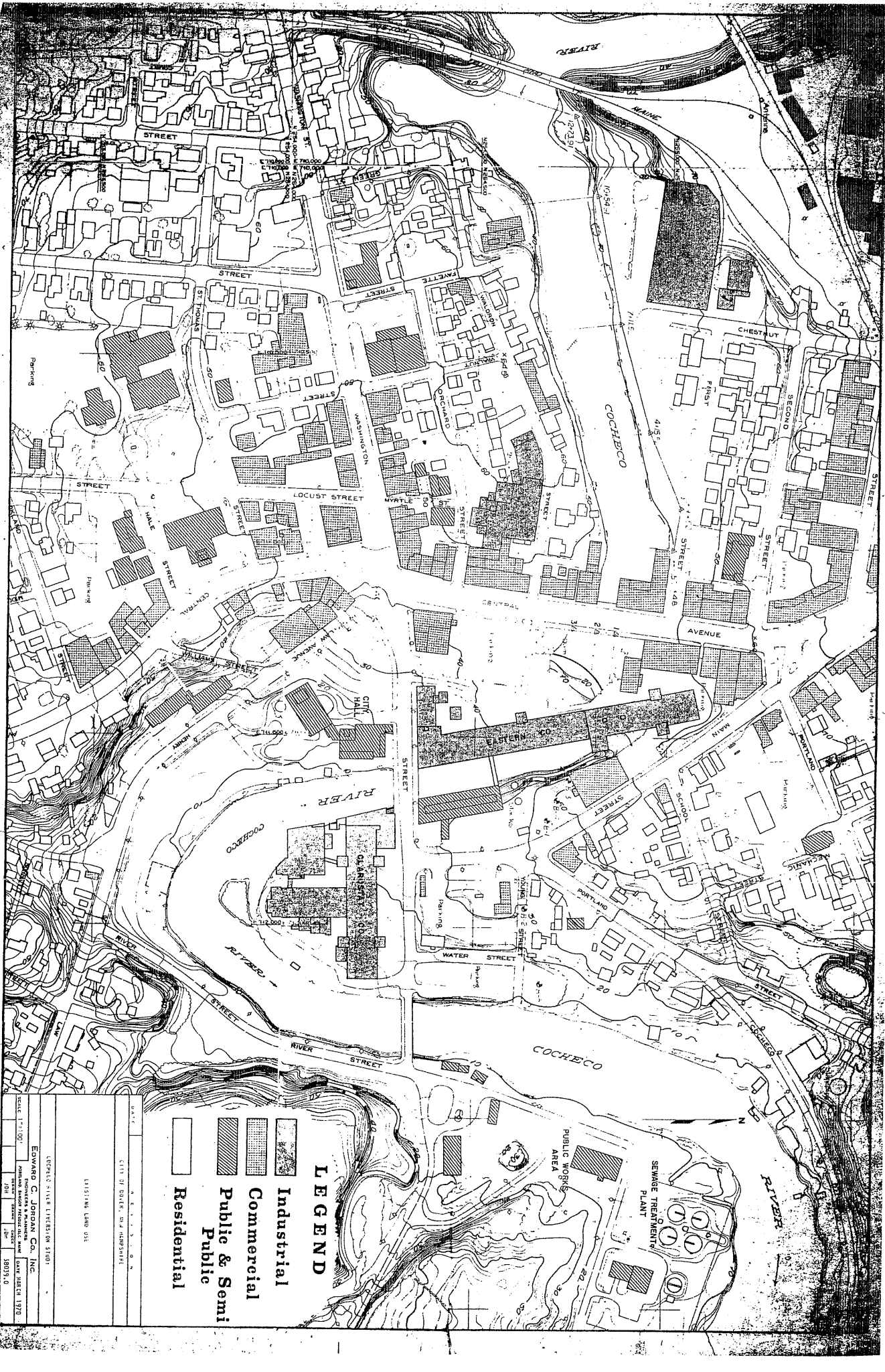


Divisions
124






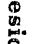
DATE		SHEET NO.	
CITY OF OMAHA, NE		DIVISION	
REDEVELOPMENT PLAN WITH DIVISION			
DESIGNED BY: EDWARD C. JORDAN CO., INC.			
DRAWN BY: EDWARD C. JORDAN CO., INC.			
SCALE: 1" = 100'			
DATE: MARCH 1970			

PLAN No 2



SHEETS: RIVER IMPROVEMENT STUDY
 EDWARD G. JOHNSON & ASSOCIATES, INC.
 1000 UNIVERSITY AVENUE, SUITE 100
 SEASIDE, CALIFORNIA 92083
 DATE: MAY 1970
 SCALE: 1" = 100'
 SHEET NO. 18093.0

LEGEND

-  Industrial
-  Commercial
-  Public & Semi Public
-  Residential

CITY OF BOKER, WA WASHINGTON
 EXISTING LAND USE



CITY OF COCHECO, NEW HAMPSHIRE
 REDEVELOPMENT PLAN - RIBBON DIVISION
 COCHECO RIVER DIVISION STUDY
 EDWARD C. JOHNSON & CO., INC.
 ARCHITECTS AND ENGINEERS
 100 N. MAIN STREET, COCHECO, N.H. 03039, U.S.A.
 SCALE: 1" = 100'
 DATE: JANUARY 1970
 PLAN NO. 3

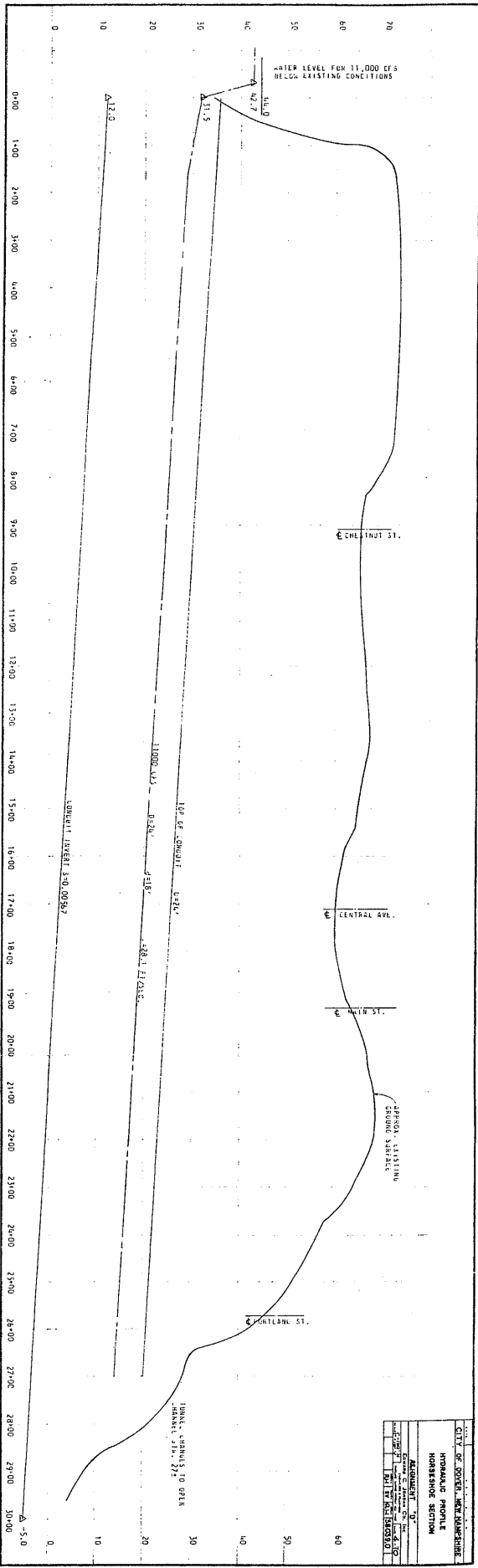
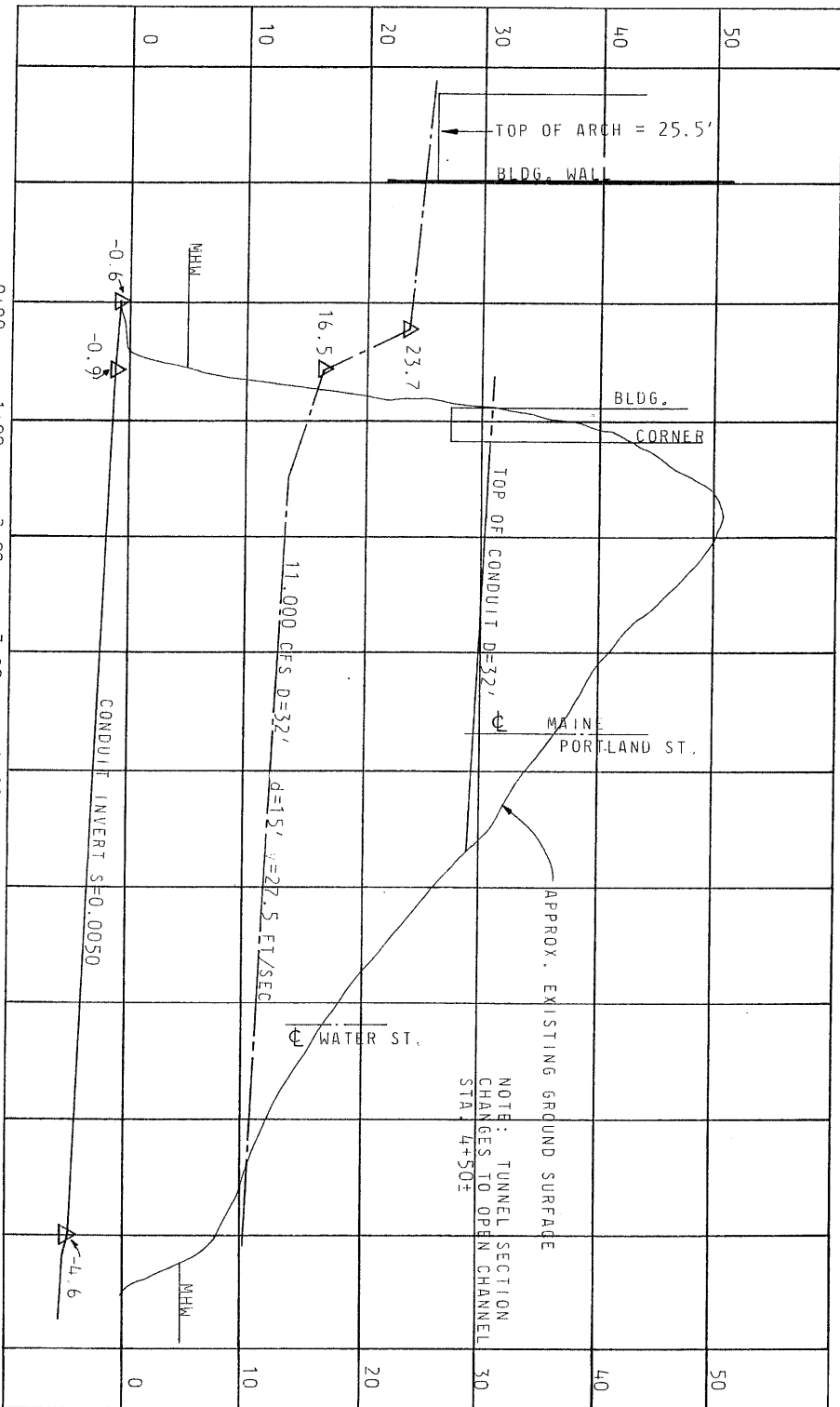


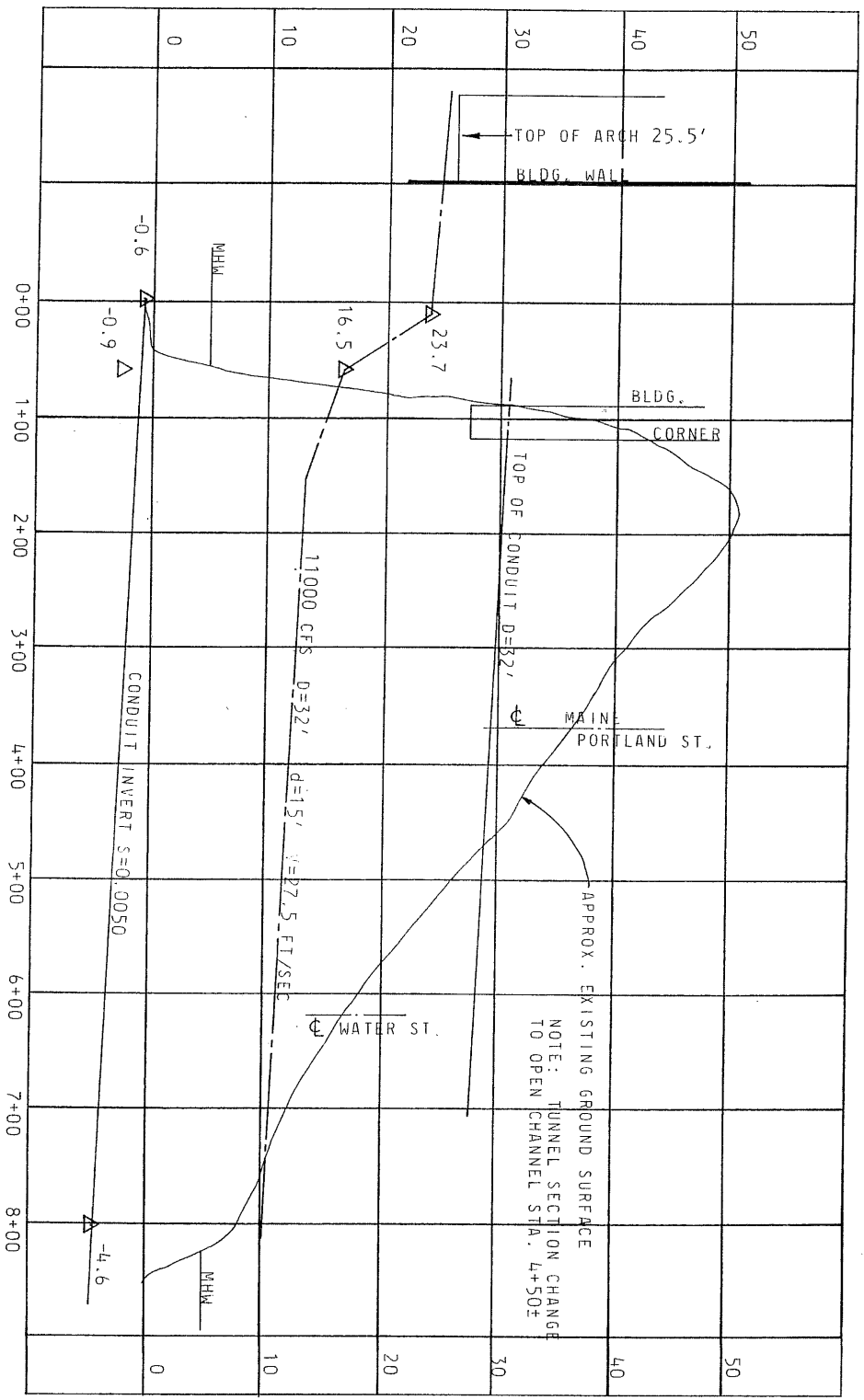
FIGURE 10



NOTE: TUNNEL SECTION
CHANGES TO OPEN CHANNEL
STA 4+50±

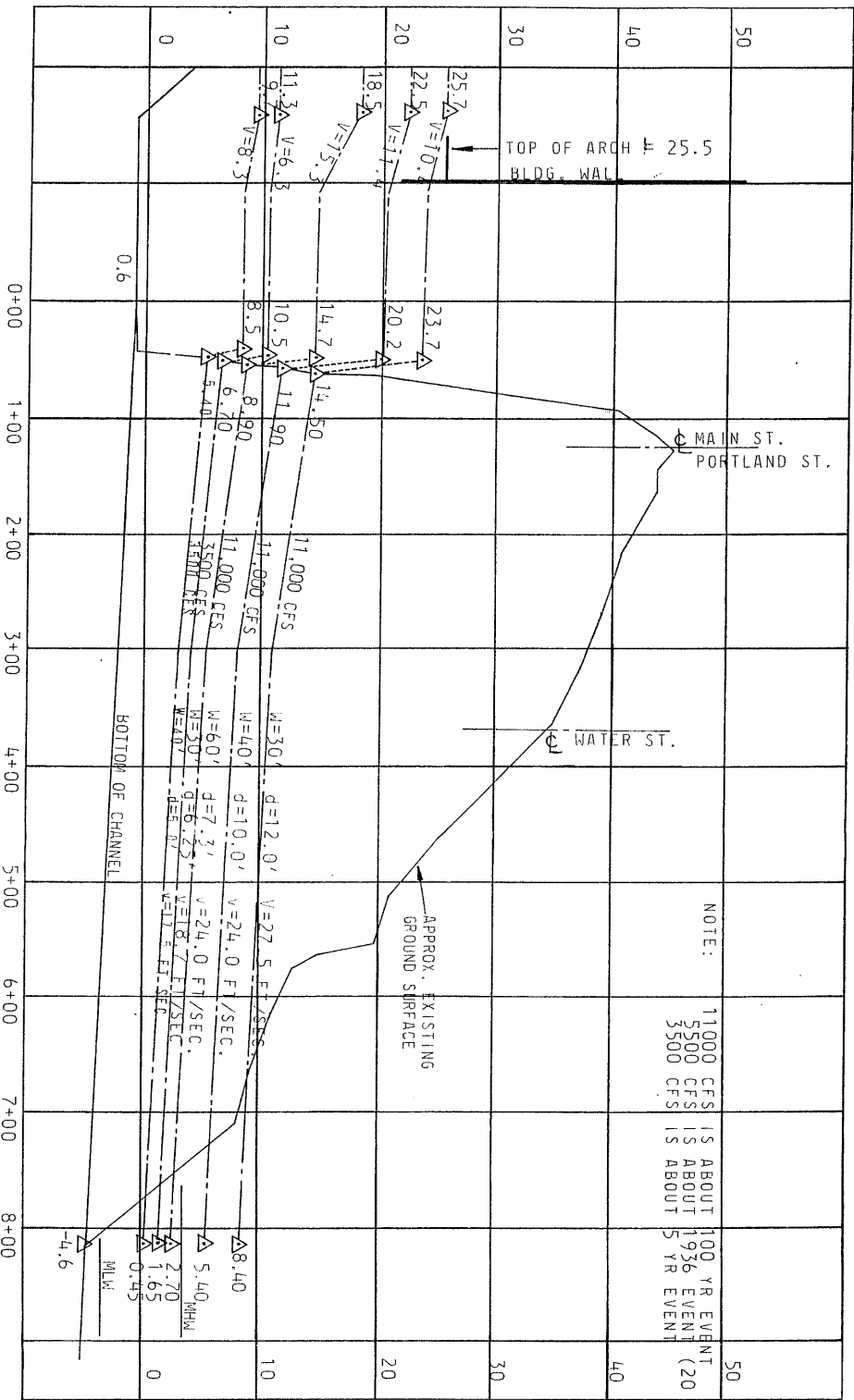
MEAN TIDE = ELEV 0.00

DATE	REVISION
CITY OF DOVER, NEW HAMPSHIRE	
HYDRAULIC PROFILE	
HORSESHOE SECTION	
ALIGNMENT "B"	
EDWARD C. JORDAN CO., INC.	
ENGINEERS & PLANNERS	
SCALE: 1" = 100' H	DATE
1" = 10' V	3803901
PROJECT: NC	



DATE	REVISION
CITY OF DOVER, NEW HAMPSHIRE	
HYDRAULIC PROFILE	
HORSESHOE SECTION	
ALIGNMENT "C"	
EDWARD C. JORDAN CO., INC.	
SCALE: 1" = 100'	DATE: 10/1/50
PROJECT: 380390	NO. 1

River Division



NOTE: 11000 CFS IS ABOUT 100 YR. EVENT
 3500 CFS IS ABOUT 1956 EVENT (20 YR. EVENT)
 500 CFS IS ABOUT 5 YR. EVENT

NOTE: MEAN TIDE = ELEV. 0.00

HYDRAULIC CONSULTANT CHARLES E. FOGG P.E.

DATE	9.5.00
CITY OF DOVER, NEW HAMPSHIRE	
HYDRAULIC PROFILE RECTANGULAR SECTION	
ALIGNMENT C	
EDWARD C. JORDAN CO., INC.	
ENGINEERS & SURVEYORS	
100 H. V. ST.	
DOVER, N.H. 03820	
PHONE (603) 862-1100	
FAX (603) 862-1100	
NC	
380390	