

DOVER PARKS

WATERFRONT PAVILION



SEPTEMBER 26, 2023

PARK

Park Street Park

Guppey Park

10 MINUTES WALK RADIUS

5 MINUTES WALK RADIUS

Hancock Park

Amanda Howard Park

Great Bay Rowing

Fish Ladder Park

Immigrants Park

Dover Recreation Dep.

Dover Arts Commission

City of Dover
Veteran's Park

Henry Law Park

Dover Skate Park

Maglaras Park

Woodman Park



City of Dover Veteran's Park

- Benches
- Walkway

The Dover Veterans Park was dedicated four years ago on Veterans Day 2017. The 23 new bricks added in 2022 brings the total number of bricks honoring veterans to well over 800. This small park is located downtown and has benches and a grassy area.



Quiet Space



Fish Ladder Parks

- Benches
- Walkway

This small (only 1/10th of an acre), linear park, located in the center of downtown Dover, is adjacent to the Cochecho River near the dam. It has several benches and a walkway that provide a viewing area for the New Hampshire Fish and Game fish ladder and the dam.



Quiet Space



Immigrants Park

- Benches

This small park is located downtown on Main Street and has benches and a grassy area to relax and enjoy the flowers while having lunch.



Quiet Space



Park Street Park

- Playground
- Benches
- Picnic tables

Bordered by Park Street and East Concord Street, this area contains a small multi-use field, a pavilion sitting area in addition to having a playground and a picnic area. A shelter with picnic tables and new playground equipment were added to this one-acre park following the 1988 Master Plan.



Family Space



Amanda Howard Park

- Playground

Amanda Howard Park, located at Elmwood and Fairview Avenue, is a neighborhood park with a slide and a swing set. Dedicated in 1977 for neighborhood resident Amanda who had succumbed to cancer, this half-acre park is a pleasant place to sit in the shade of the tall Pine trees and relax.



Family Space

Henry Law Park

- Indoor pool
- Playground
- Outdoor amphitheater
- Boat Access

Given to the City of Dover by Mr. Henry Law and maintained under a trust, the six-acre Henry Law Park is located in the central business district. The park is one of Dover's oldest and most intensively used recreation facilities. With approximately 1,200 feet of frontage on the Cochecho River, the park also contains the Butterfield building, home to the Children's Museum of New Hampshire, opened in July of 2008. The park also has a year-round indoor pool, a playground, an outdoor amphitheater for entertainment, an area for boat access and picnic areas.



Family Space



Hancock Park

- Half basketball court
- Pavilion
- Picnic tables
- Lawn area
- Playground
- Walking path

Hancock Park was renovated and re-dedicated in 2007. The park, located on Hancock Street and just over a half-acre in size, has a half basketball court, a pavilion with picnic tables, open lawn area, and a variety of age-appropriate playground equipment. A gravel walking path surrounds the park.



Family Space



Guppey Park

- Ice Arenas
- 50-meter outdoor pool
- Softball field
- Picnic area
- Volleyball court
- Pavilion

Located at the corner of Oak Street and Portland Avenue, this is one of Dover's primary recreational facilities. Guppey Park, gifted to the City of Dover by the Guppey family, contains the Dover Ice Arena, a year-round ice arena with two sheets of ice, home to youth hockey and other skating programs. The thirty-nine-acre park also contains a 50-meter outdoor pool named for Jenny Thompson, a Dover resident, who won 8 Olympic gold medals and 12 overall in swimming. Guppey Park contains approximately 25 acres of woodland, a lighted adult softball field and family recreation/picnic area. The park also has a sand volleyball court and pavilion located near the outdoor pool.



Athletic Space



Dover Skate Park

- Ramps
- Obstacles for skateboards
- In-line skates
- Relocating to Guppey Park

The Dover Skatepark is located on River Street at the east end of Henry Law Park. The facility includes ramps and obstacles utilized by people on skateboards, and in-line skates. Bikes are not allowed in the park. The construction of the skatepark was due in large part to contributions of time and funding by the Dover Rotary Club.



Athletic Space



Maglaras Park

- 2 Baseball fields

Located nearby Henry Law Park, Maglaras Park has frontage on Henry Law Avenue and the Cochecho River. The twenty-nine-acre park presently contains two minor league baseball fields. The multi-use playing field no longer exists as a portion of the park is occupied by the dredge disposal cell built to contain the dredge material removed from the Cochecho River. The cell will be capped when dredging is completed and can be utilized in future park development.

The privately owned Dover Little League Fields are directly adjacent to this park. Maglaras Park has the potential to be one of Dover's outstanding recreational facilities for organized sporting events. In January 2006, a Master Plan was completed detailing what may be possible for the park depending on Dover's future recreation needs.



Athletic Space



Woodman Park

- Baseball field
- 2 Basketball courts
- 4 Tennis courts
- Track
- Playground

The Woodman Park School on Towle Avenue contains numerous recreation amenities including one re-constructed baseball field (2007) for the 13-year-old Babe Ruth Division, two basketball courts and four tennis courts (renovated in 2008) in the seventeen-acre park. In addition, the school has a gymnasium, a gravel track around the ball field, updated playground equipment and a large open lawn area.



Athletic Space



Dover Recreation Department

- Fitness room
- Butterfield Gym
- Meeting Room
- Cafe
- Public Service

Located in the newly renovated (2006) McConnell Center, the Recreation Department Facilities are accessible by Dover's residents looking for any information regarding recreation, desiring to register for programs, or needing to speak with recreation leaders. In addition to the main offices of the Recreation Department, there are fitness rooms with Cybex machines, cardio and free weight rooms, and shower facilities. The second floor is home to Butterfield Gym, accommodating various sports such as basketball and



Athletic Space

Dover Arts Commission

The Arts Commission promotes the arts in Dover. Advocates for artists. Highlights local talent.



Art Space



Great Bay Rowing

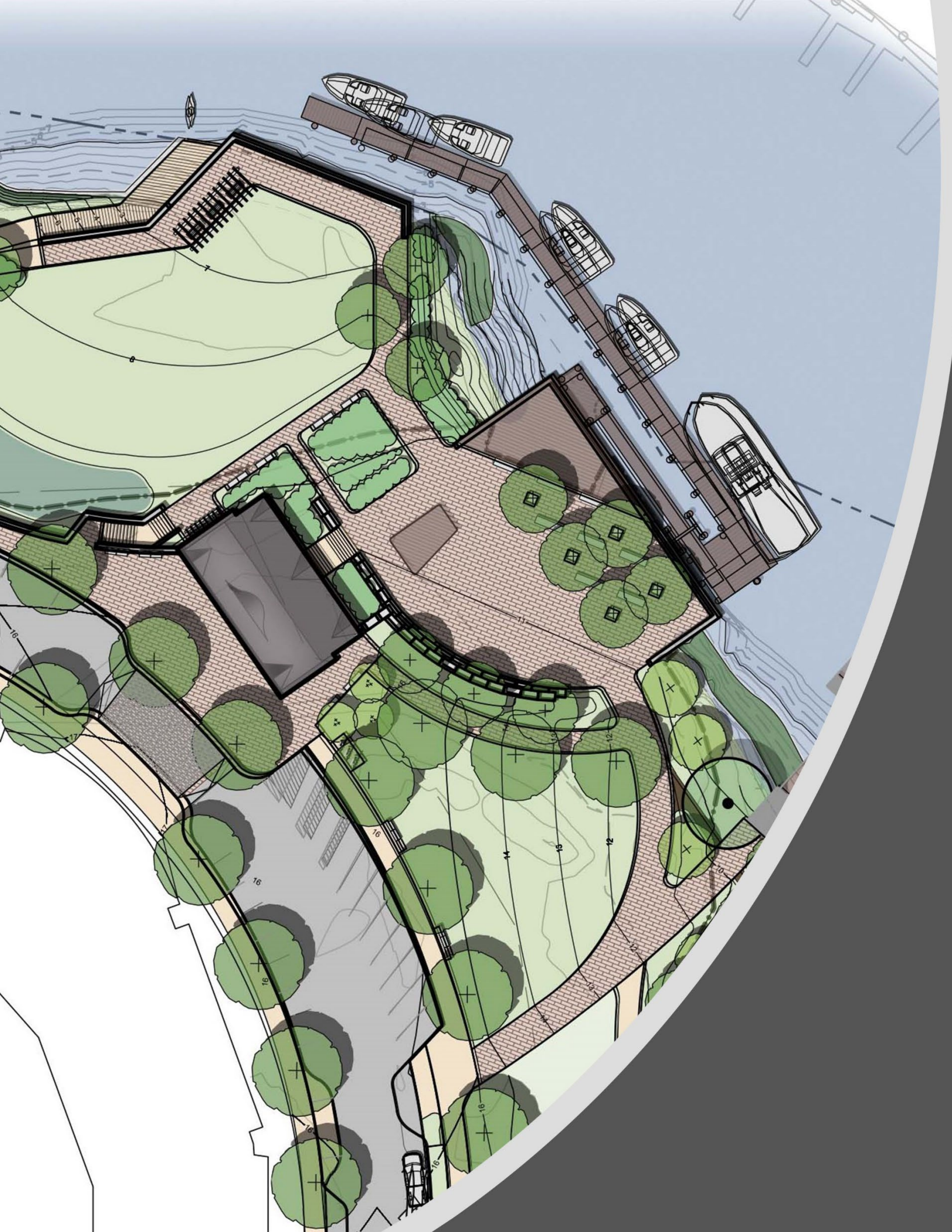
- Boats
- Kayaks



Non-Profit Community Rowing in New Hampshire.



Waterfront



ARCHITECTURAL DESIGN

WATERFRONT PAVILION



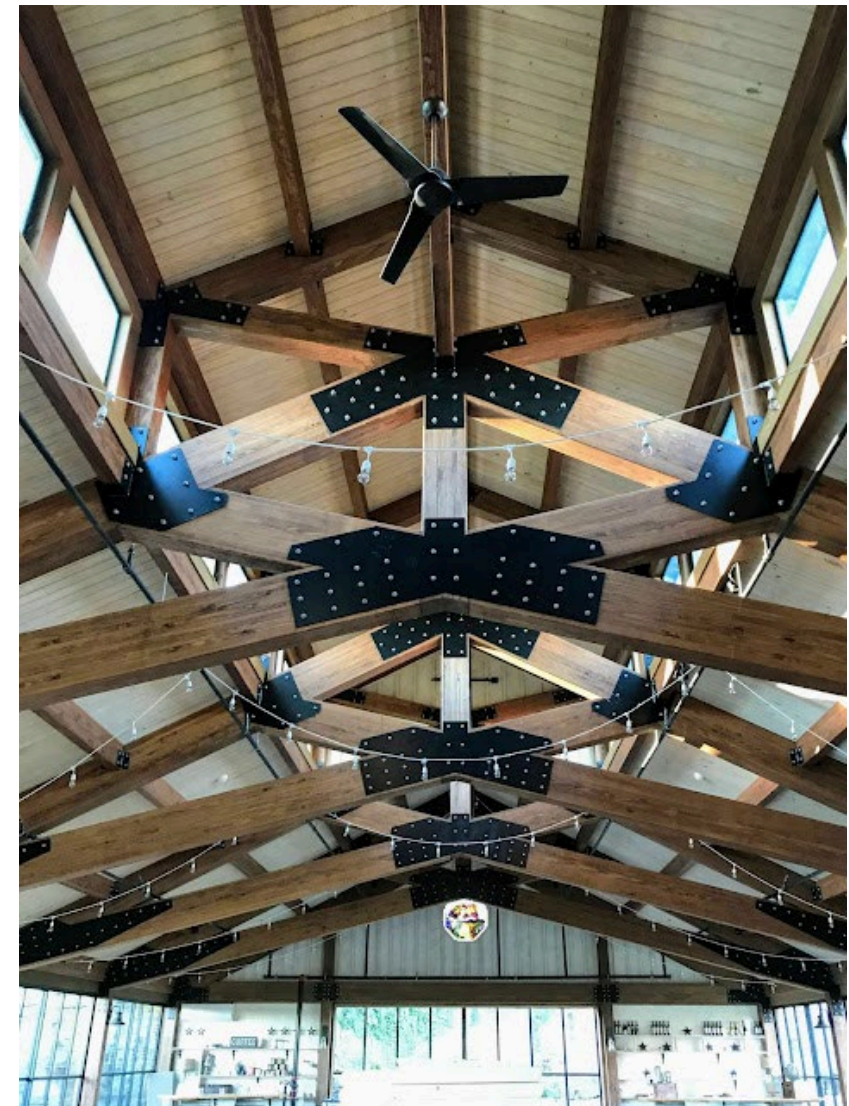
SEPTEMBER 26, 2023



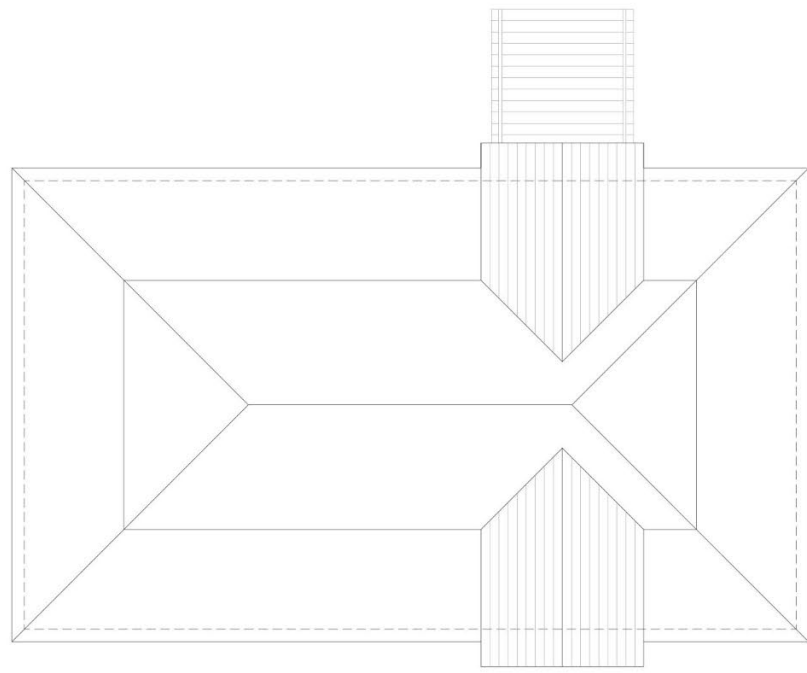
Covered Public Gathering Space



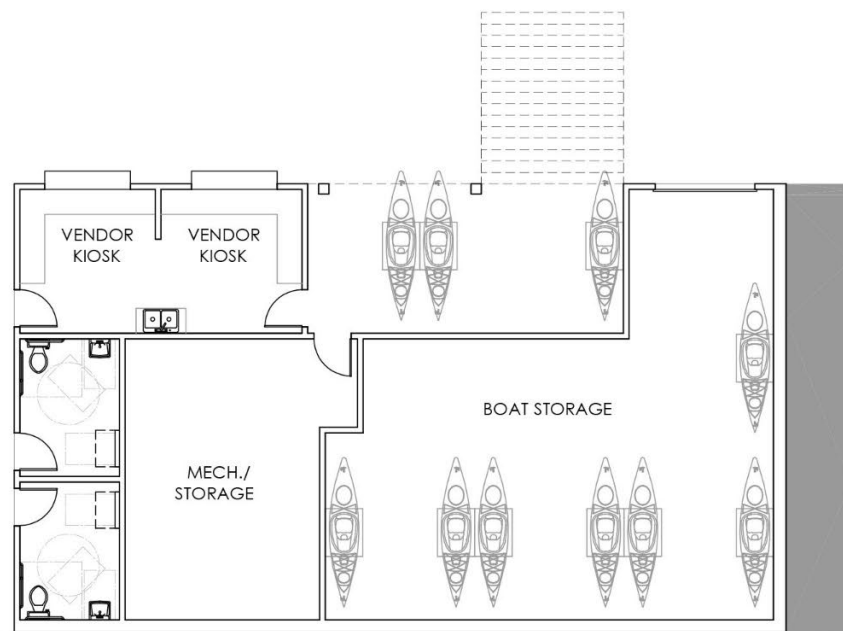
Memorial Pavilion, Dover, NH.



Clerestory Post & Beam



ROOF PLAN



LOWER LEVEL PLAN

- Open Porch on 3 sides
- Visitor Space (+/- 700 SF)
- Built-in Seating
- Boat Storage
- Mechanical / Storage
- Vendor Kiosk
 - Information
 - Food Vendor
 - Art
 - Boating



FIRST FLOOR PLAN

WATERFRONT PAVILION
DOVER, NH





Covered Public Gathering Space

Gateway Statement



Madbury Public Library



Covered Public Gathering Space

Gateway Statement

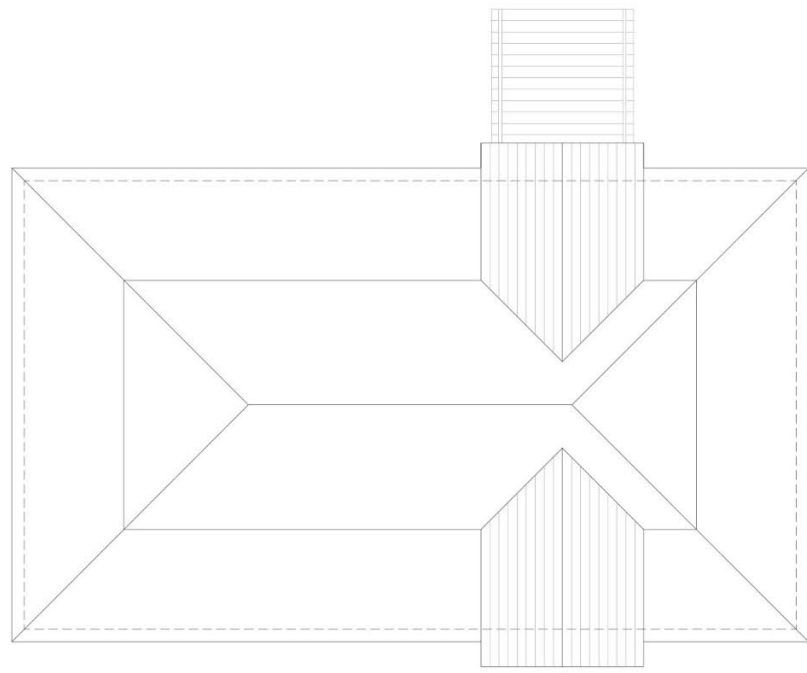
Perimeter Water Views

Covered Public Gathering Space

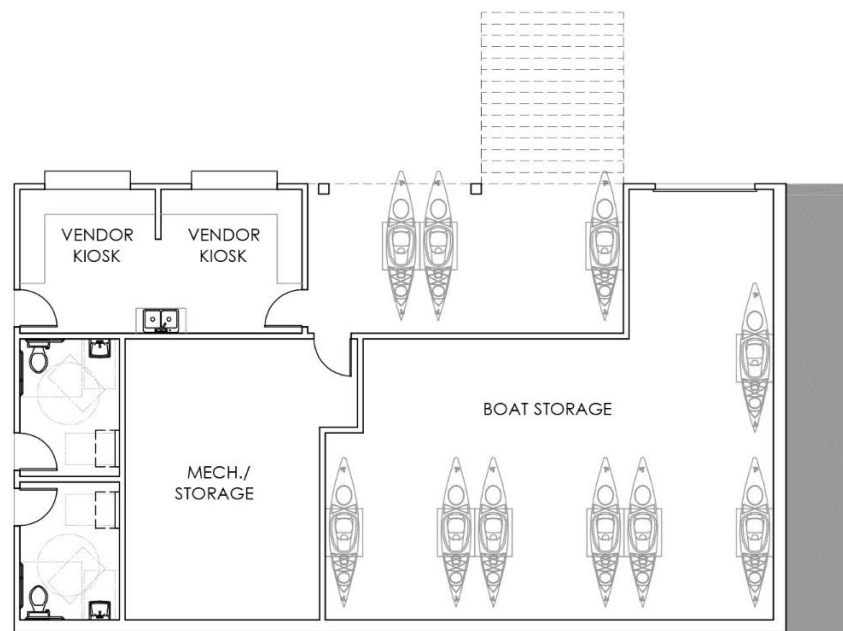
Gateway Statement

Perimeter Water Views

Group Seating Areas



ROOF PLAN



LOWER LEVEL PLAN

- Open Porch on 3 sides
- Visitor Space (+/- 700 SF)
- Built-in Seating
- Boat Storage
- Mechanical / Storage
- Vendor Kiosk
 - Information
 - Food Vendor
 - Art
 - Boating



FIRST FLOOR PLAN

WATERFRONT PAVILION
DOVER, NH



Covered Public Gathering Space

Gateway Statement

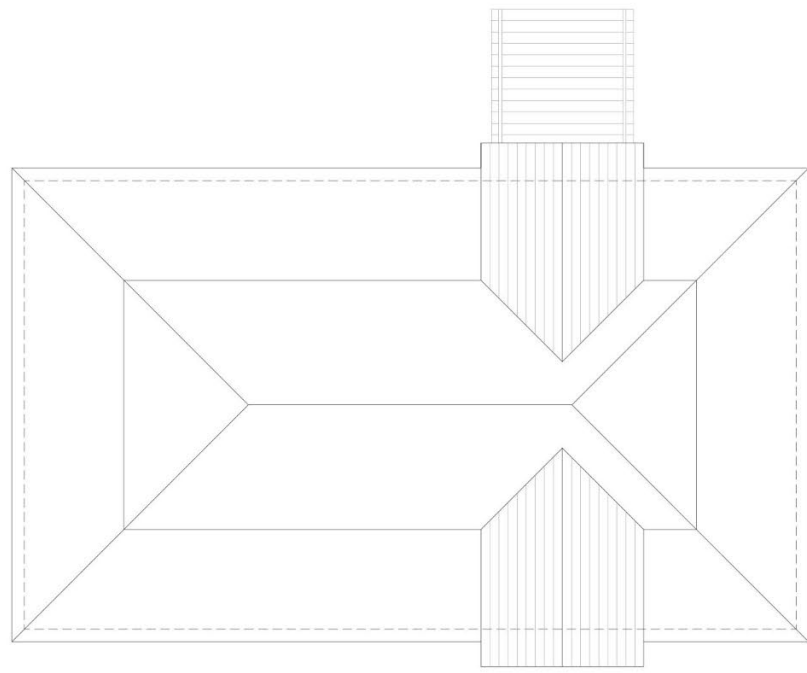
Perimeter Water Views

Group Seating Areas

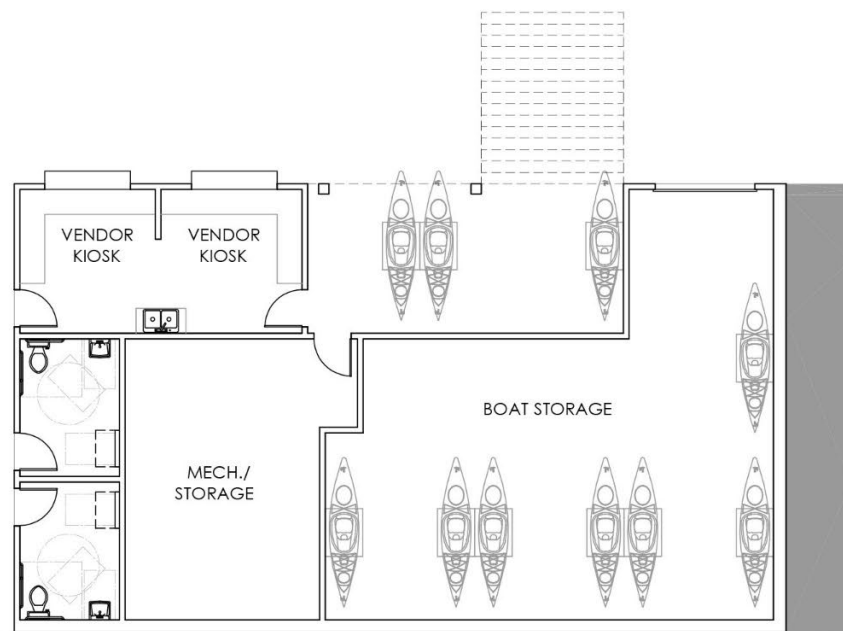
Art Community and Vendor Support



Vendors and Lighting



ROOF PLAN



LOWER LEVEL PLAN

- Open Porch on 3 sides
- Visitor Space (+/- 700 SF)
- Built-in Seating
- Boat Storage
- Mechanical / Storage
- Vendor Kiosk
 - Information
 - Food Vendor
 - Art
 - Boating



FIRST FLOOR PLAN

WATERFRONT PAVILION
DOVER, NH



Covered Public Gathering Space

Gateway Statement

Perimeter Water Views

Group Seating Areas

Art Community and Vendor Support

Boating Storage or Rental



Bear Brook State Park Pavilions
Allenstown, NH

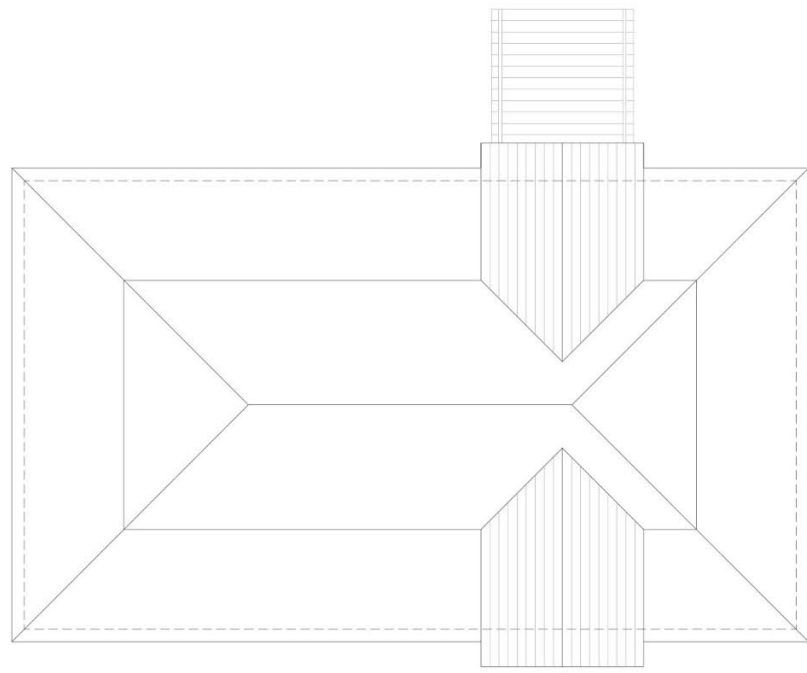




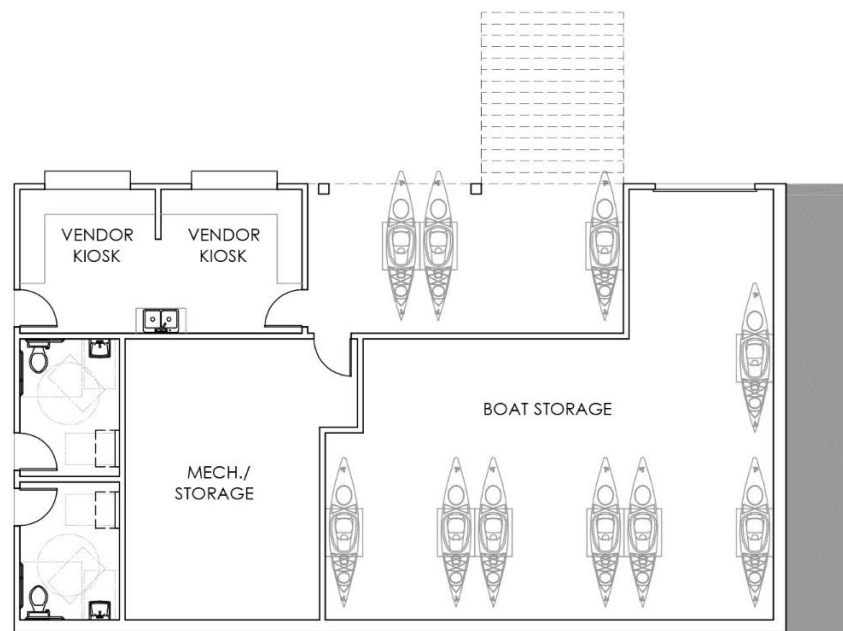
Great Bay Rowing Concept



Seating and Storage



ROOF PLAN



LOWER LEVEL PLAN

- Open Porch on 3 sides
- Visitor Space (+/- 700 SF)
- Built-in Seating
- Boat Storage
- Mechanical / Storage
- Vendor Kiosk
 - Information
 - Food Vendor
 - Art
 - Boating



FIRST FLOOR PLAN

WATERFRONT PAVILION
DOVER, NH





Cathartes Master Plan, Dover, NH.

Covered Public Gathering Space

Gateway Statement

Perimeter Water Views

Group Seating Areas

Art Community and Vendor Support

Boating Storage or Rental



SEPTEMBER 26, 2023
© CJ ARCHITECTS LLC

VIEW FROM WATERFRONT

WATERFRONT PAVILION
DOVER, NH





SEPTEMBER 26, 2023
© CJ ARCHITECTS LLC

VIEW FROM WATERFRONT

WATERFRONT PAVILION
DOVER, NH





SEPTEMBER 26, 2023
© CJ ARCHITECTS LLC

VIEW FROM ROADSIDE PLAZA

WATERFRONT PAVILION
DOVER, NH





SEPTEMBER 26, 2023
© CJ ARCHITECTS LLC

VIEW FROM ROADSIDE

WATERFRONT PAVILION
DOVER, NH





THANK YOU!



SEPTEMBER 26, 2023