

Citizen's Petition to Rezone

824, 826, 828 Central Ave.

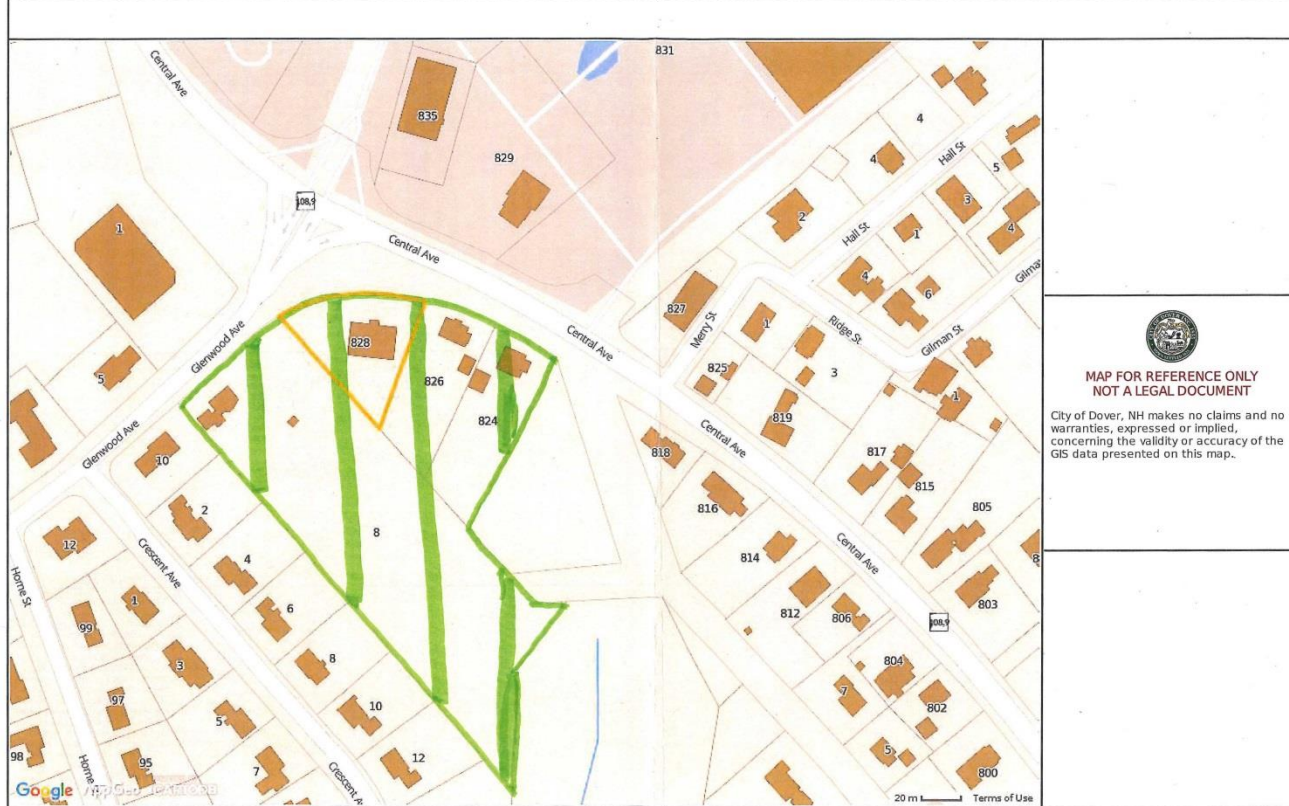
8 Glenwood Ave.

Scott Mitchell Real Estate, LLC

Parcels - Tax Map

City of Dover, NH

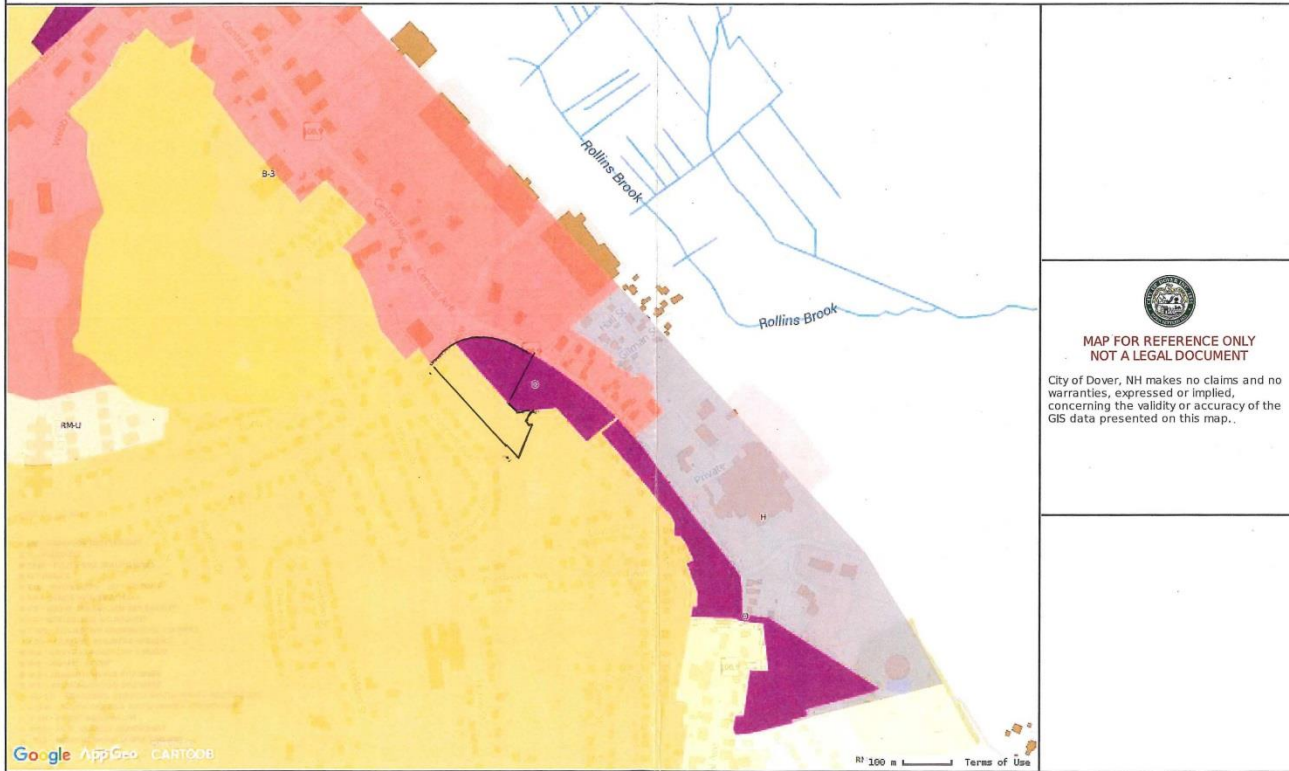
March 6, 2016



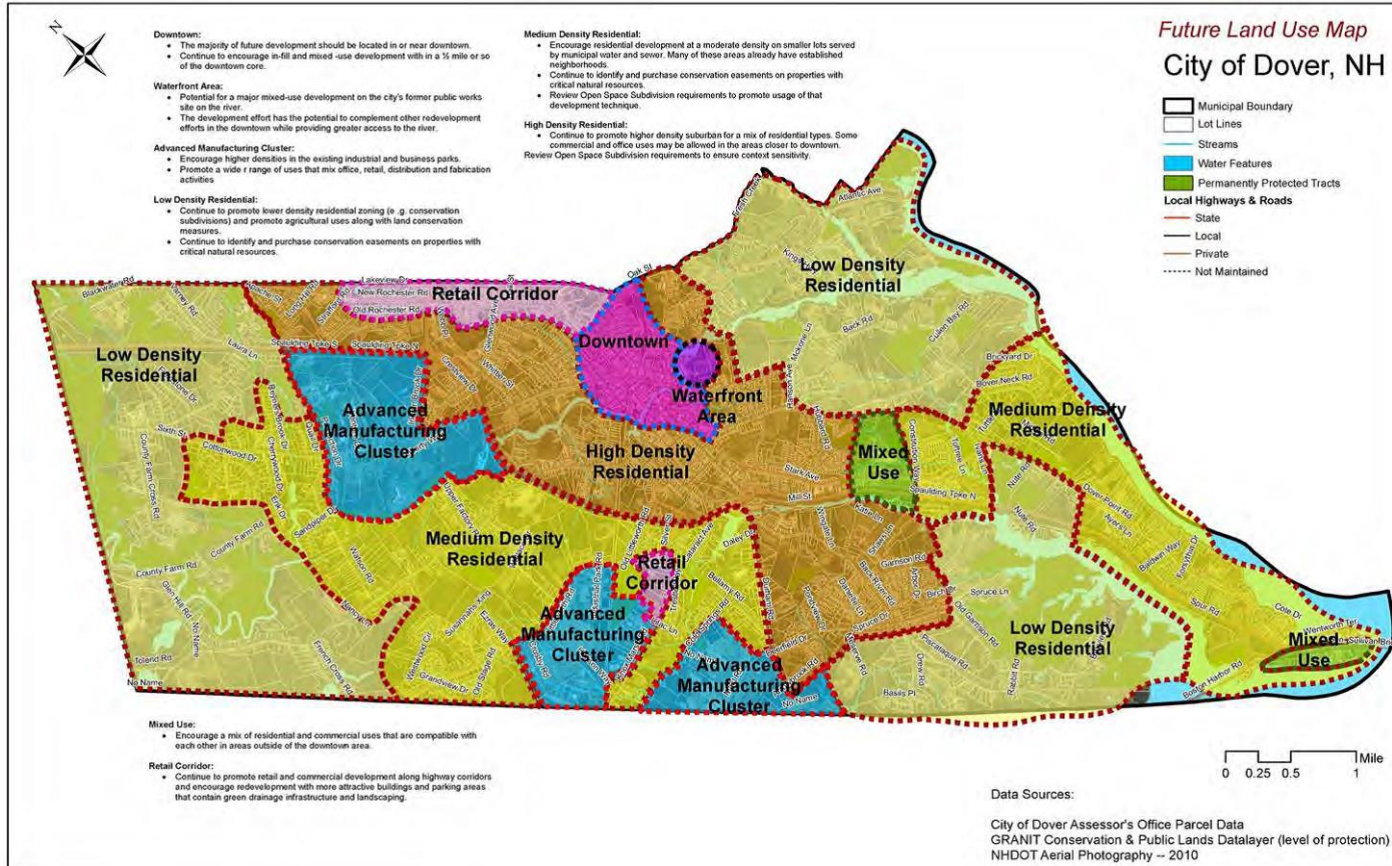
Zoning Map

City of Dover, NH

March 21, 2016



Future Land Use Map – Master Plan



Retail Corridor



Retail Corridor

- “Continue to promote retail and commercial development along highway corridors and encourage redevelopment with more attractive buildings and parking areas that contain green drainage infrastructure and landscaping.”

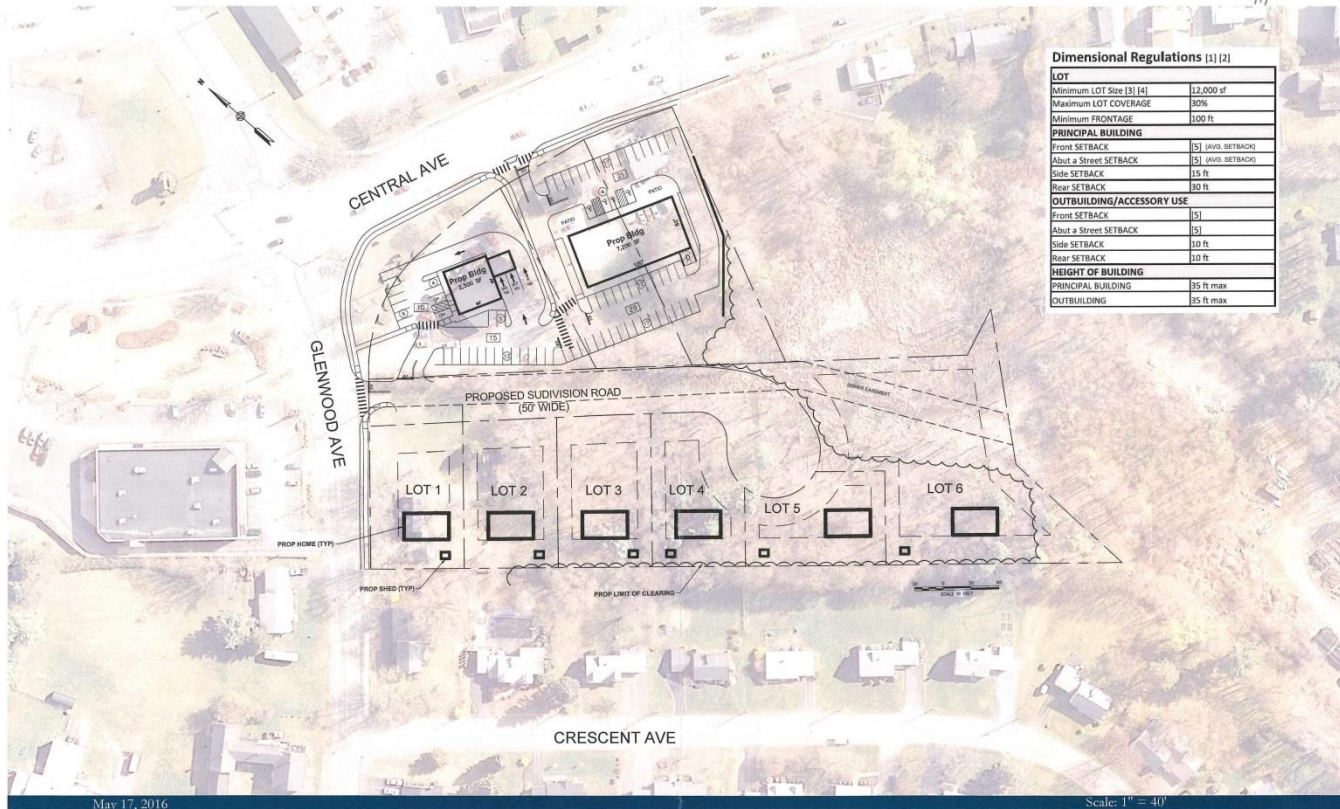
Conceptual Plan



May 17, 2016

Scale: 1" = 40'

Yield Plan



City of Dover Goal Setting Session

January 23, 2016

- Goal #4: Implement Long-Term Economic Development
 - a. Develop long-term continuous improvement plan for economic development
 - b. Provide opportunities for coordinate, well-planned growth and development (commercial and residential; downtown (waterfront); all economic and age groups)
 - c. ***Increase commercial growth through rezoning and redevelopment***
 - d. Maintain sustainable, affordable growth
 - e. ***Strongly encourage commercial development to broaden tax base and stabilize impact on residential properties***

City of Dover Goal Setting Session

January 23, 2016

- **Strategic Objective 3:** Identify and rezone appropriate property parcels to spur/enhance commercial development to further balance the commercial-to-residential ratio by five percent in 10 years (measured annually)