

New Hampshire's Coastal Watershed Conservation Plan (2021)

Summary:

New Hampshire's Coastal Watershed Conservation Plan includes two mapping products used to identify high value natural resources and conservation priorities within the coastal watershed to support climate resilience, wildlife, habitats and corridors, and priority agricultural and water resources. Despite progress over the last 15 years, additional and sustained conservation is needed to protect our natural systems and natural infrastructure that supports resilient communities. Proposed approaches include permanent land protection as well using the Plan to support local, state, and federal land use decision-making.

Keywords:

- Conservation
- Wildlife
- Habitat
- Water
- Climate
- Agriculture
- Land Use
- Mapping

Key Points:

- The Bellamy River and Cocheco River sub-watersheds are identified as areas where considerably more conservation investments should be made.
- Seven and eight percent of the Conservation Focus Areas are conserved across the Bellamy River and Cocheco River sub-watersheds, respectively, which is below the 11.8% average for all sub-watersheds (Table 10; page 35).
- One and two percent of the Coastal Priority Agricultural Resources are conserved across the Bellamy River and Cocheco River sub-watersheds, which is similar to the 1.3% average for all sub-watersheds (Table 10; page 35).
- 22% (4,092 acres) of Dover lands are identified as Conservation Focus Areas and 27% (1,116 acres) of these are vulnerable or unprotected.
- 11% (1,964 acres) of Dover lands are identified as Priority Agricultural Resources, and 57% (1,114 acres) of these are vulnerable or unprotected.

Suggested Uses:

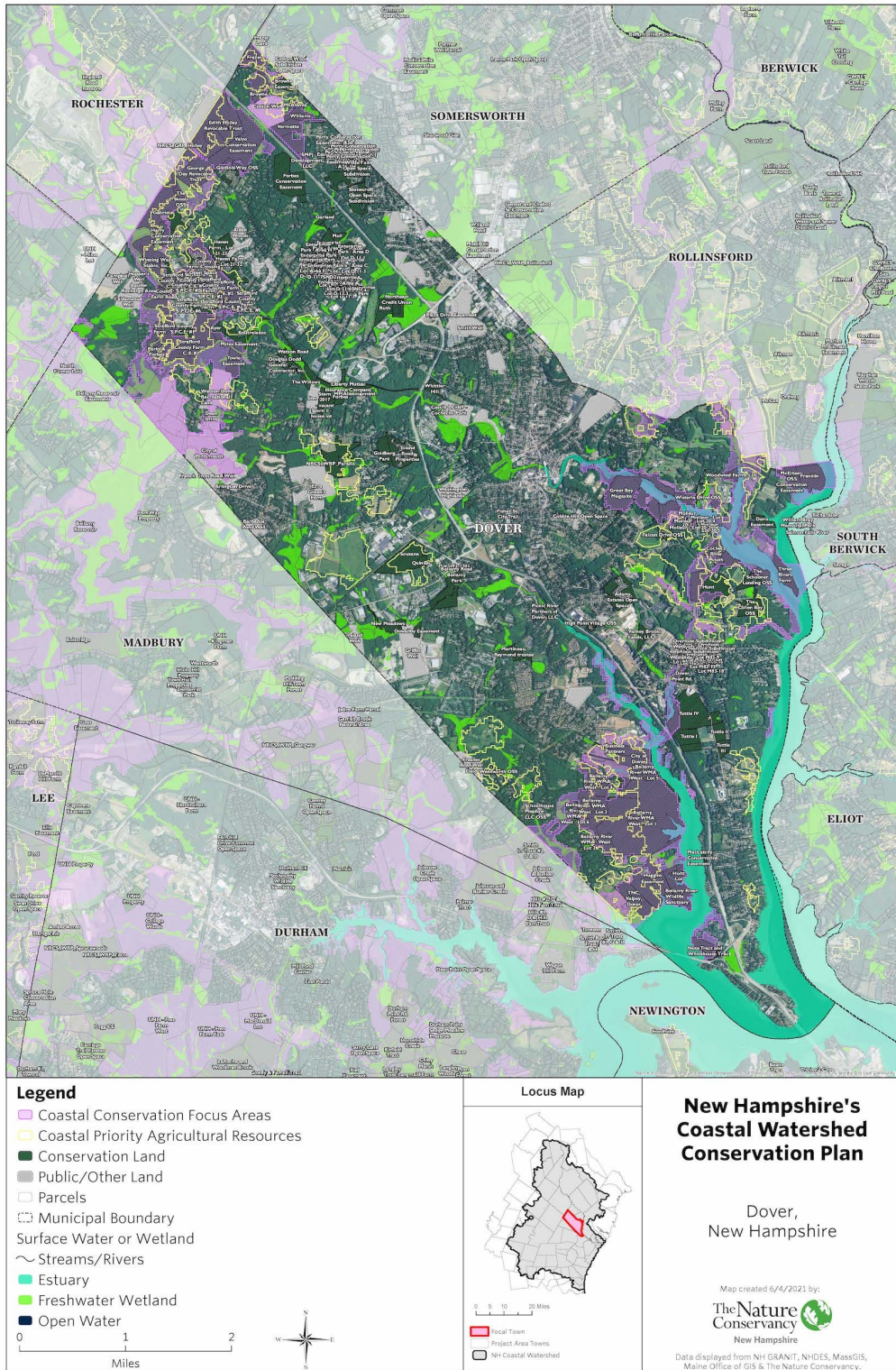
- Identify local priorities for conservation planning
- Incorporate conservation of key natural resources into land use planning
- Inform local land use decisions including project siting, conservation overlay districts or ordinances, or local buffers and setbacks
- Use the data and maps to support grant funding and community funding requests



Note: Data are available on the NH Coastal Viewer. Detailed instructions can be found on page 44 of the report. Town and subwatershed maps are also available in Appendix A and B.

[Find this and other resources on Dover's Climate Resources Webpage](#)

Example Map



Report Authors: Peter Steckler and Anna Ormiston, The Nature Conservancy, NH
Photo Credits: Bellamy Preserve, Emily Lord

The development of this factsheet was made possible, in part, by funding from NOAA's Office for Coastal Management under the Coastal Zone Management Act in conjunction with the NH Department of Environmental Services Coastal Program.



New Hampshire
Coastal Program

